

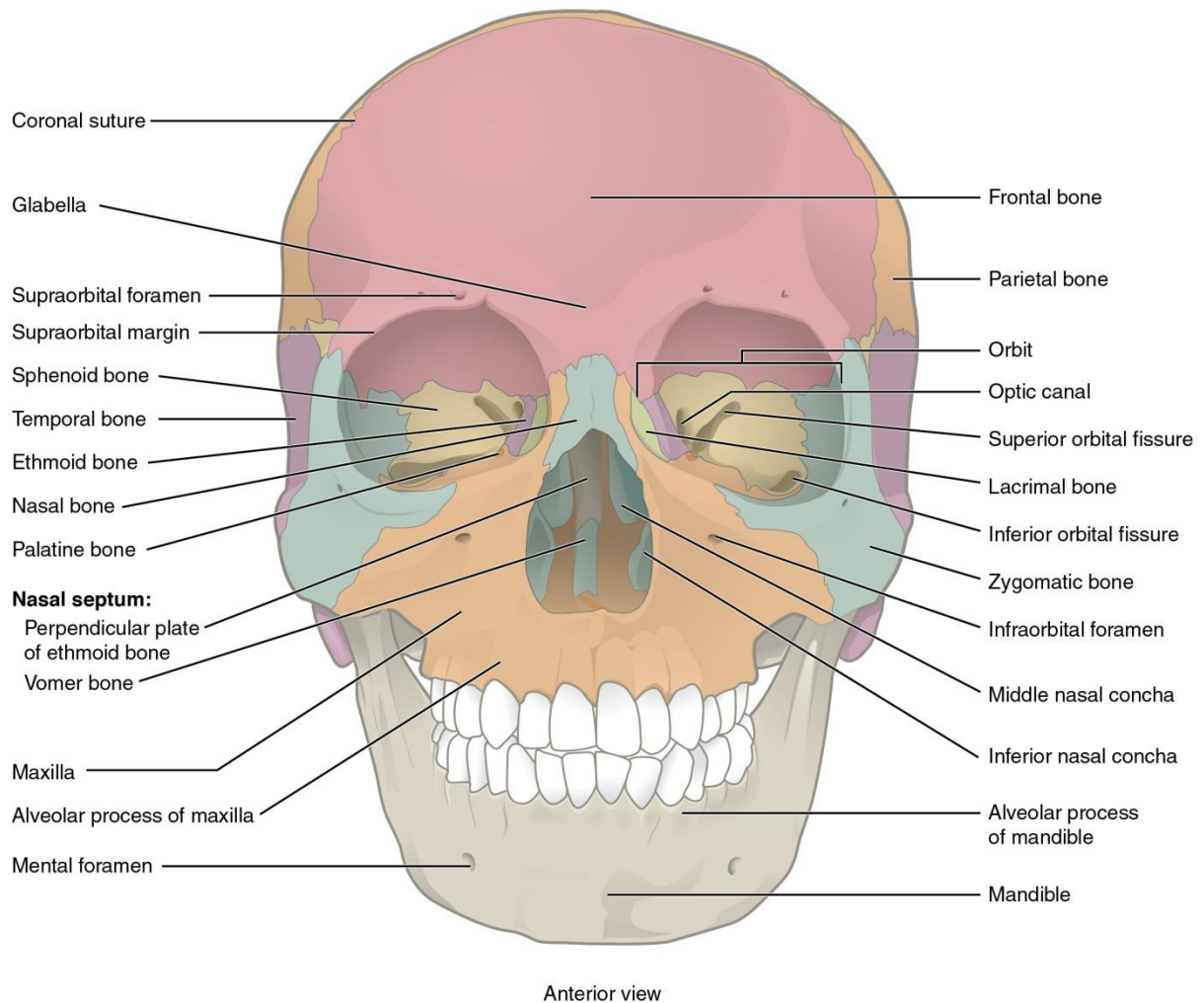
PRACTICAL 3:

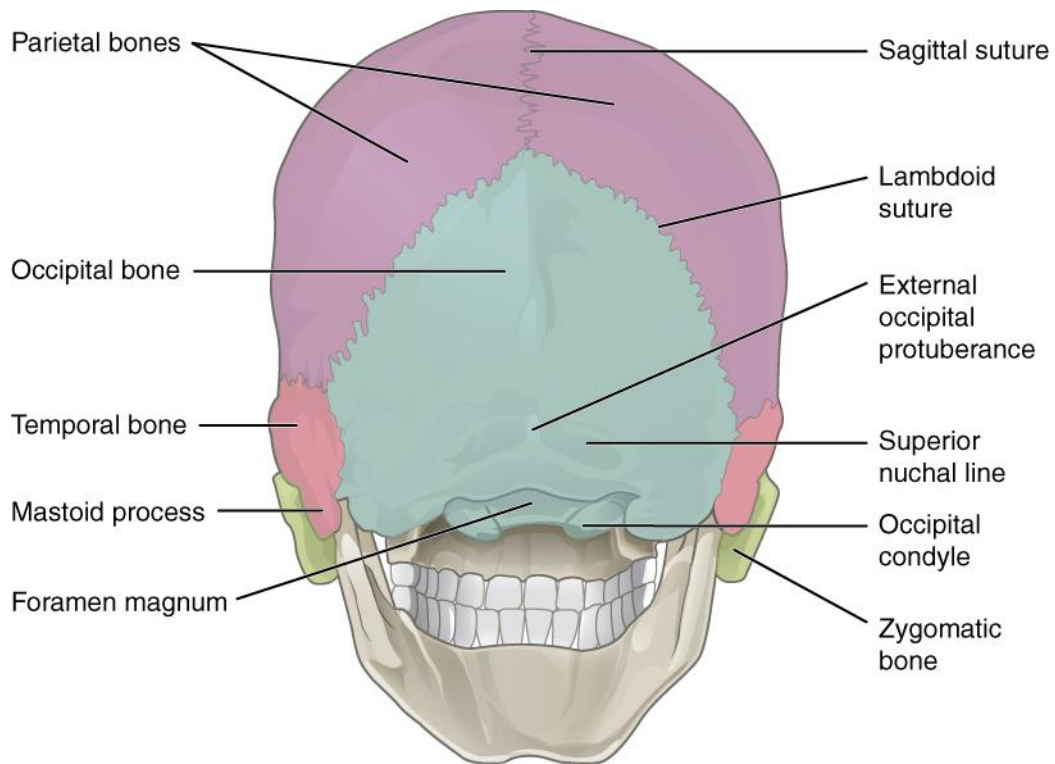
THE SKELETAL SYSTEM – LECTURER'S GUIDE

Full Name:	
Matric No:	
Programme:	
Date of Submission:	
Objective (s):	<ol style="list-style-type: none"> 1. Identify the type of joint (if any), location, features and function (s) of the skull. 2. Identify the type of joint (if any), location, features and function (s) of the sternum. 3. Identify the type of joint (if any), location, features and function (s) of the ribs. 4. Identify the type of joint (if any), location, features and function (s) of the vertebrae. 5. Identify the type of joint (if any), location, features and function (s) of the shoulder girdle. 6. Identify the type of joint (if any), location, features and function (s) of the pelvic girdle. 7. Identify the type of joint (if any), location, features and function (s) of the upper limb. 8. Identify the type of joint (if any), location, features and function (s) of the lower limb.

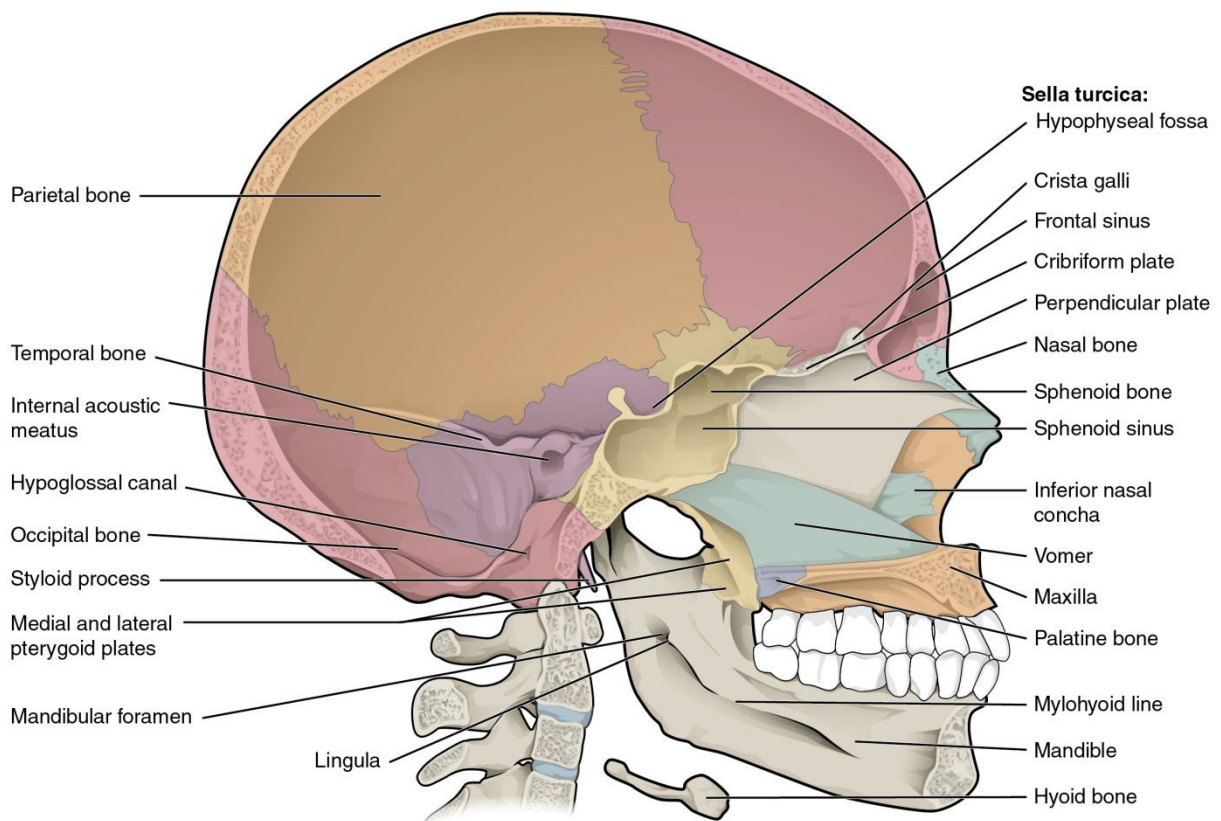
INSTRUCTION (S):

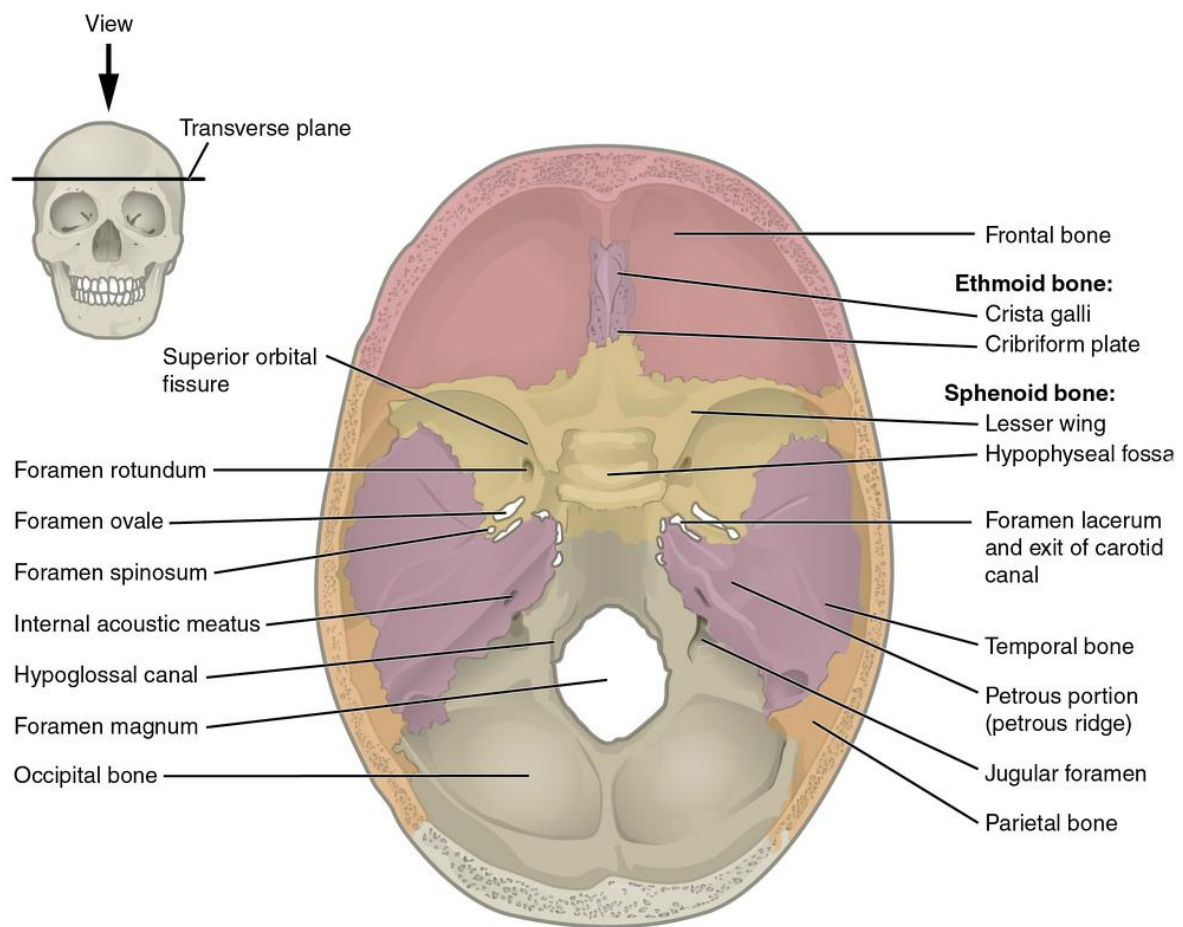
1. Identify the type of joint (if any), location, features and function (s) of the skull.





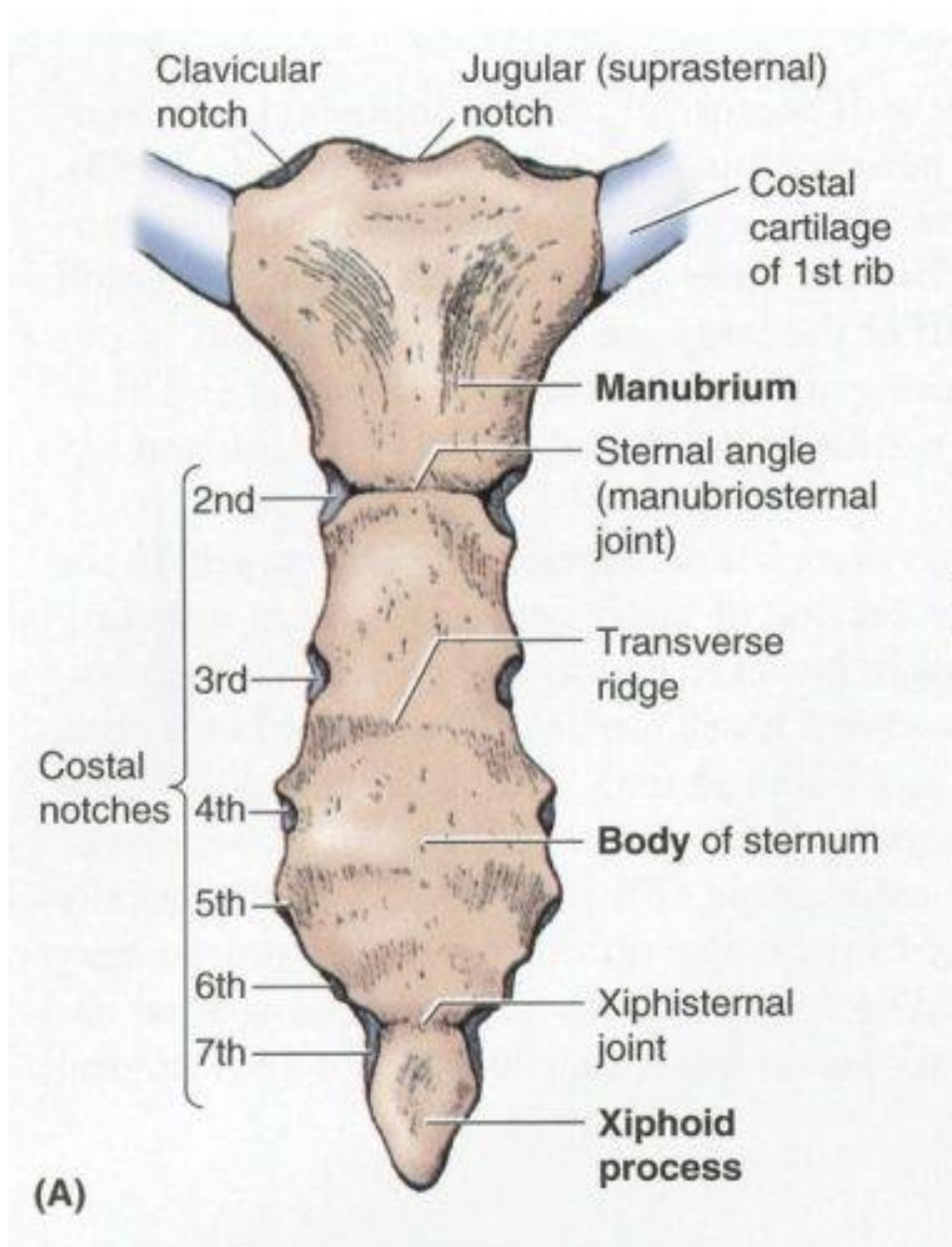
Posterior view



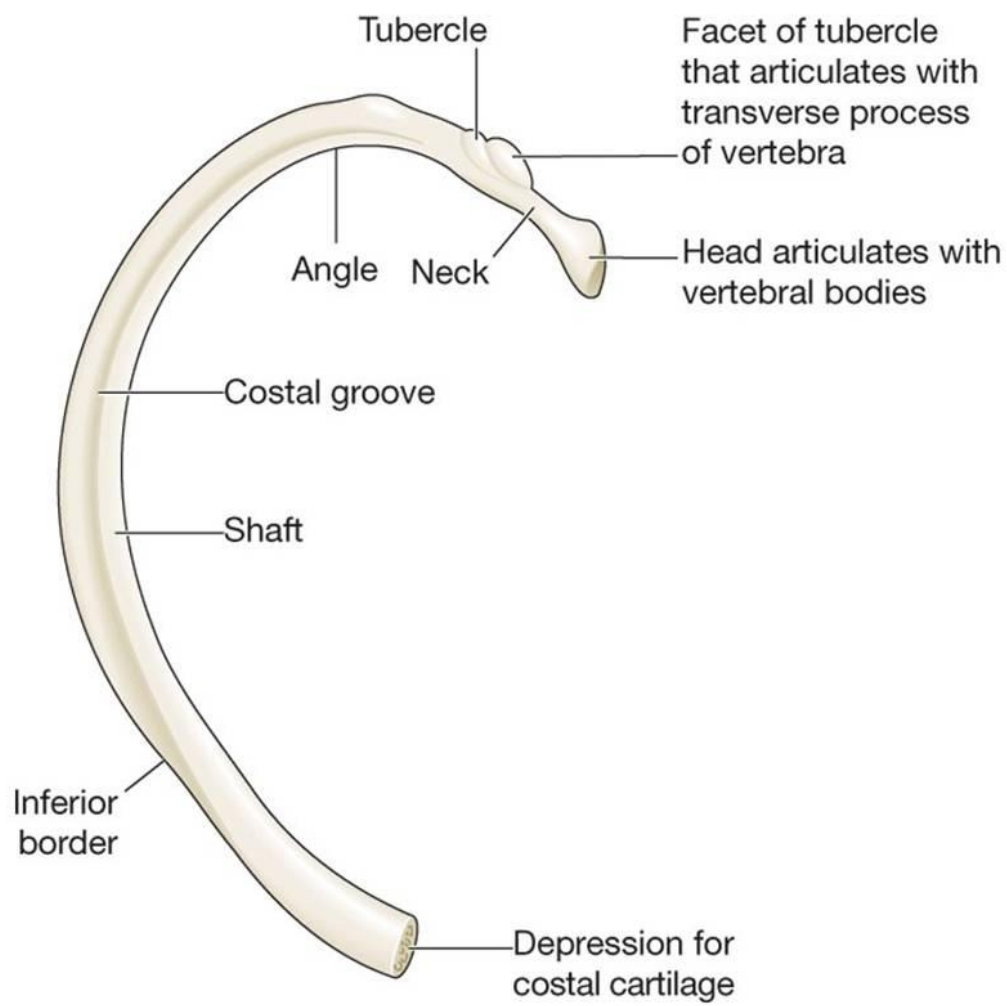


Superior View

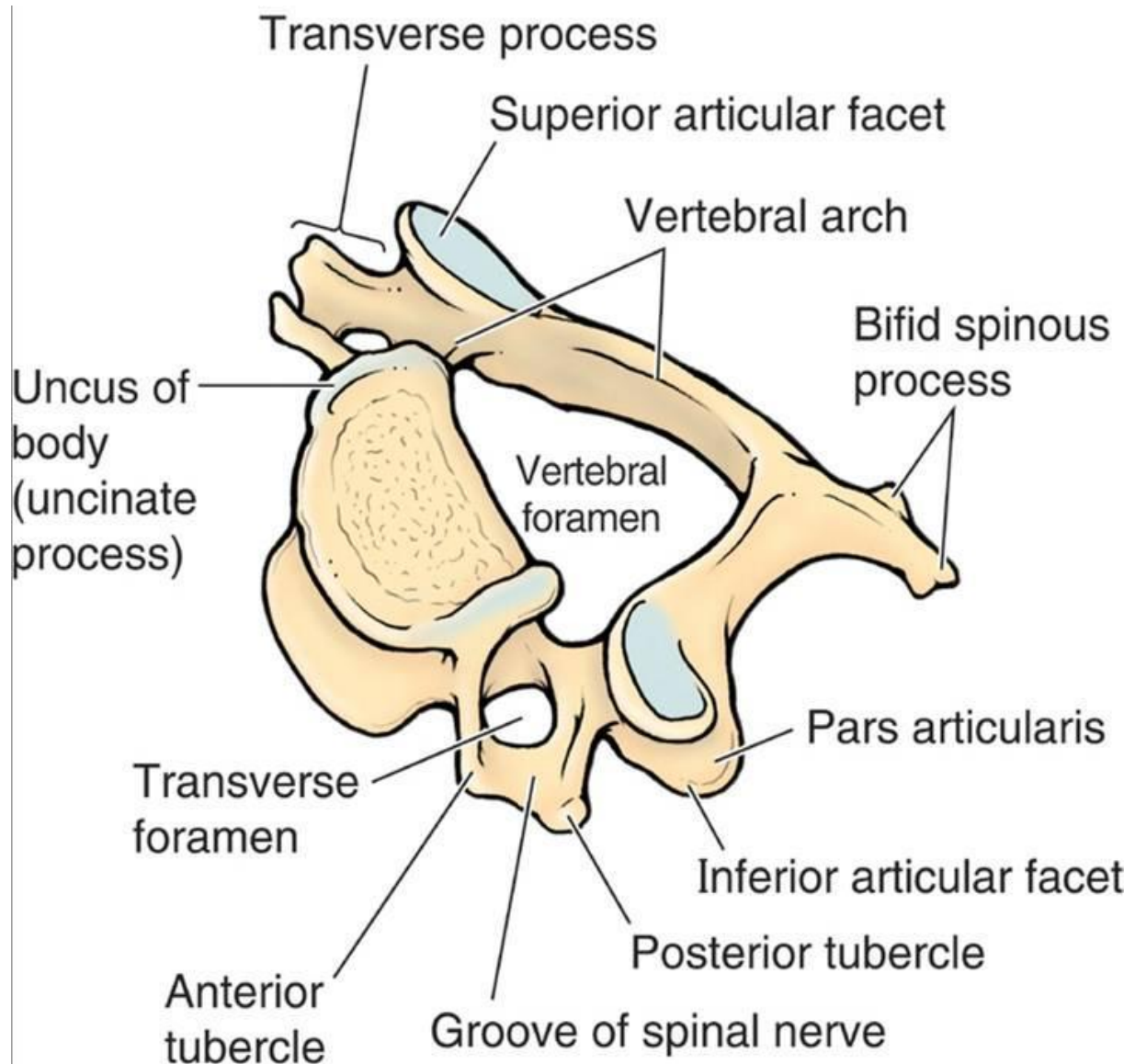
2. Identify the type of joint (if any), location, features and function (s) of the sternum.



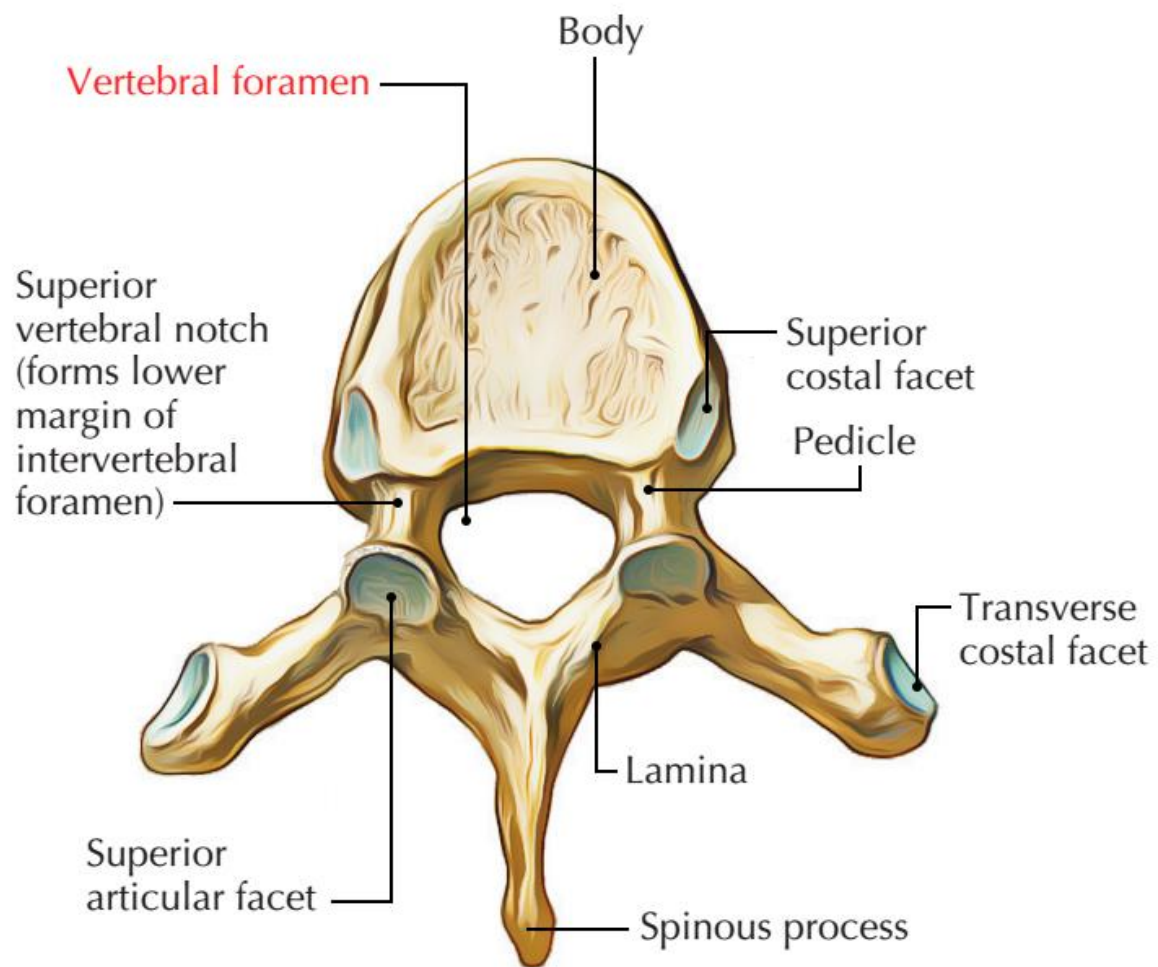
3. Identify the type of joint (if any), location, features and function (s) of the ribs.

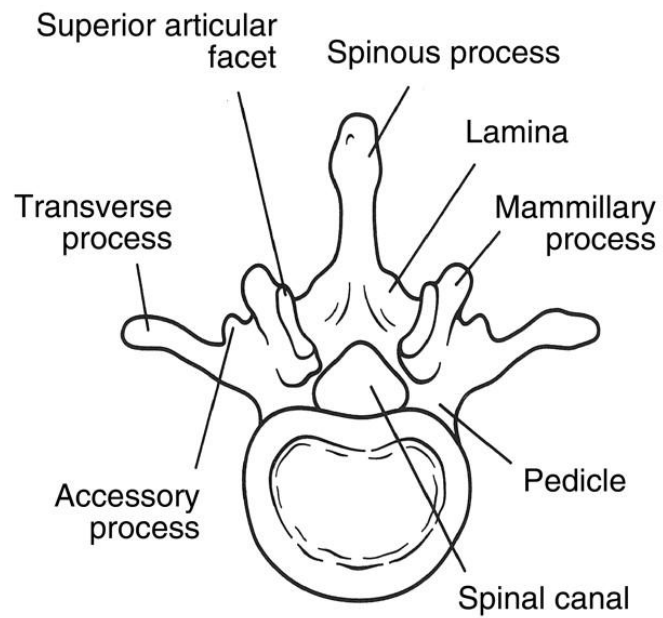


4. Identify the type of joint (if any), location, features and function (s) of the vertebrae.

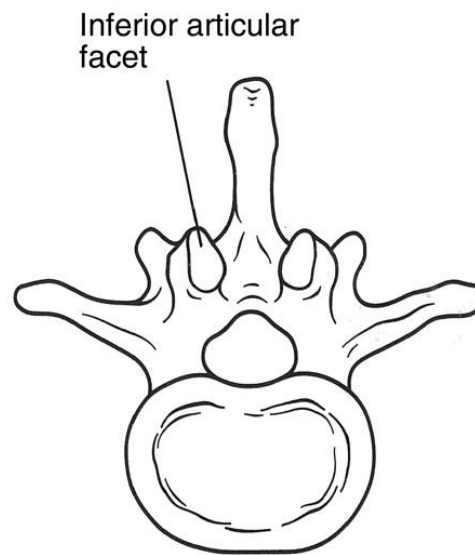


**Left anterior superior oblique view
of "typical" cervical vertebra**

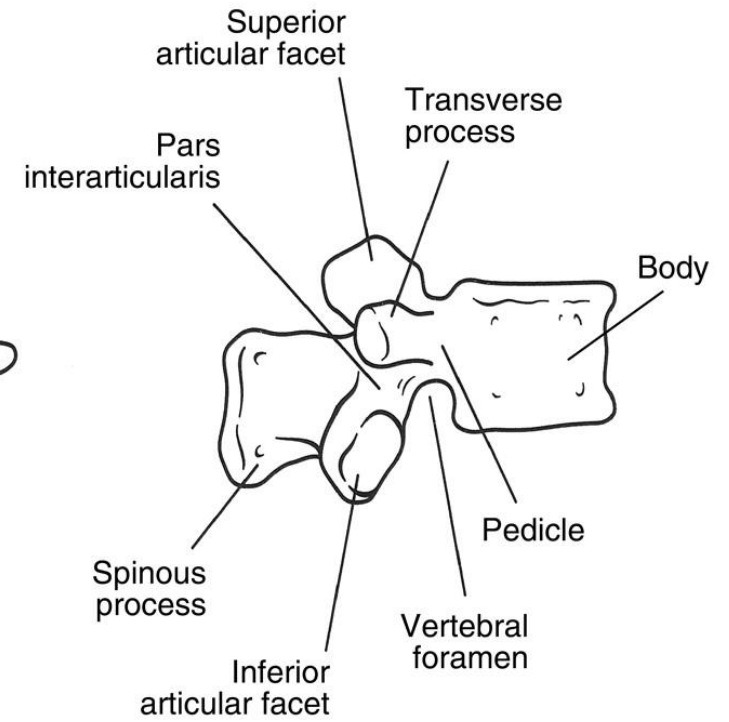




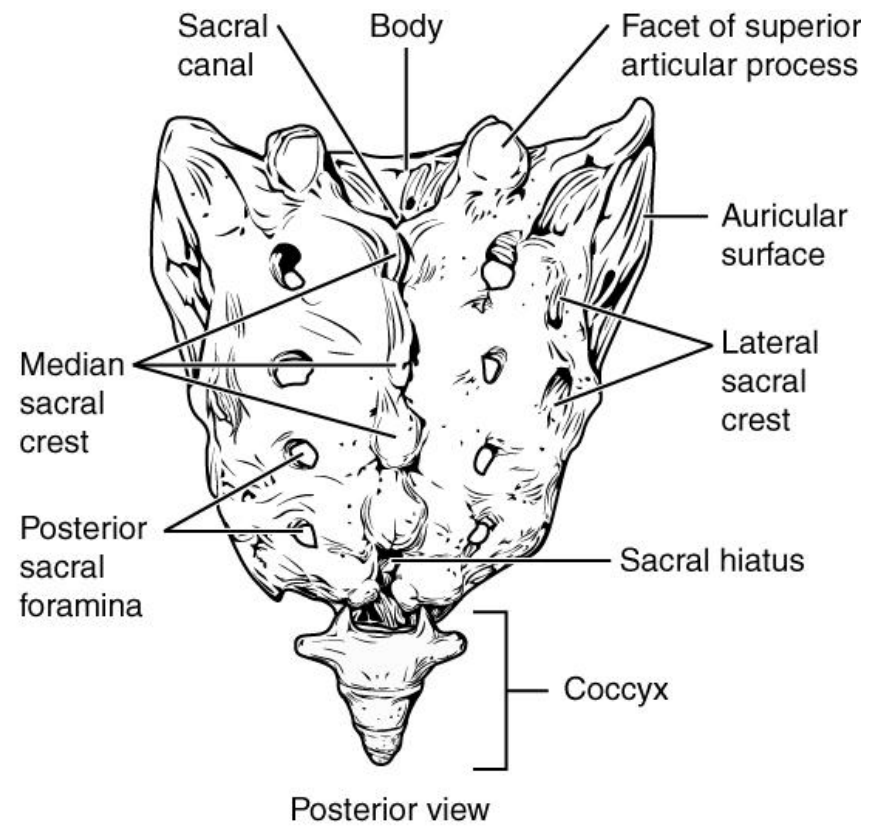
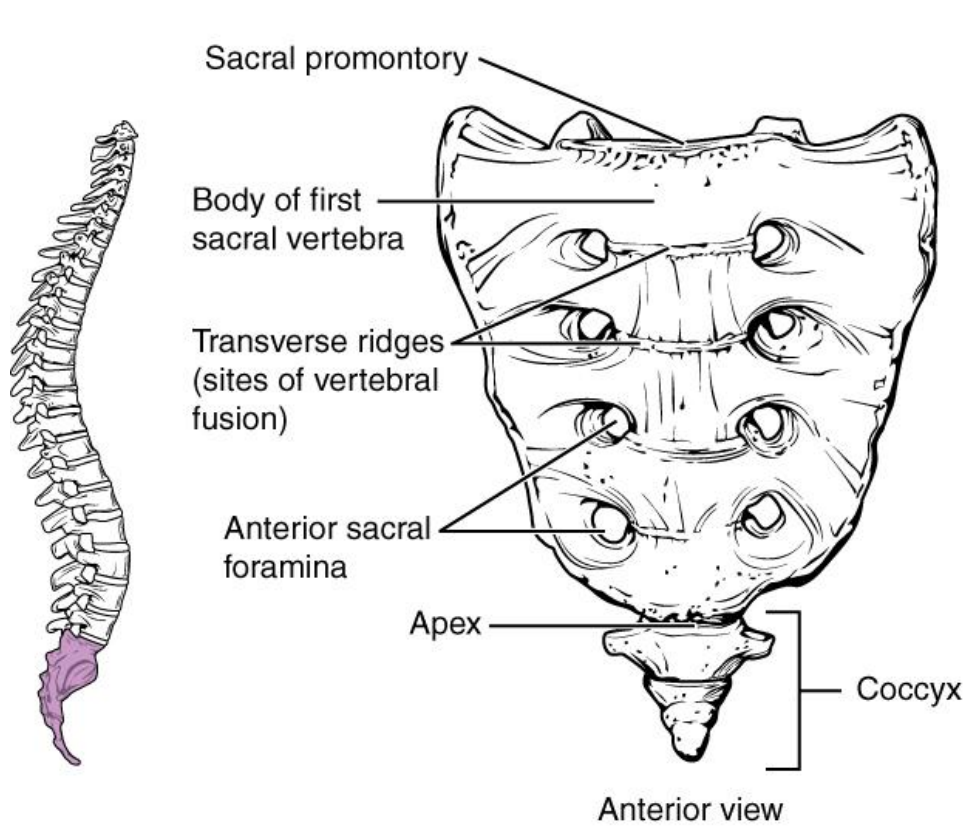
A



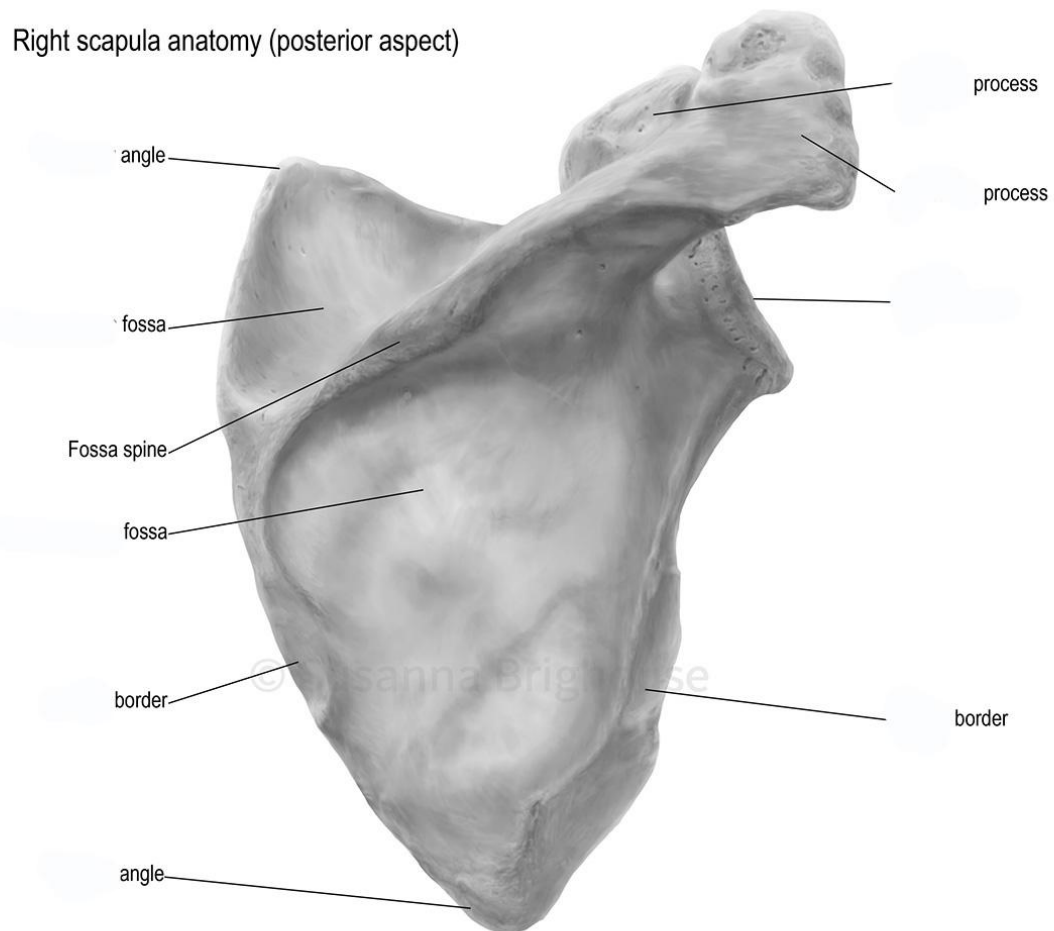
B

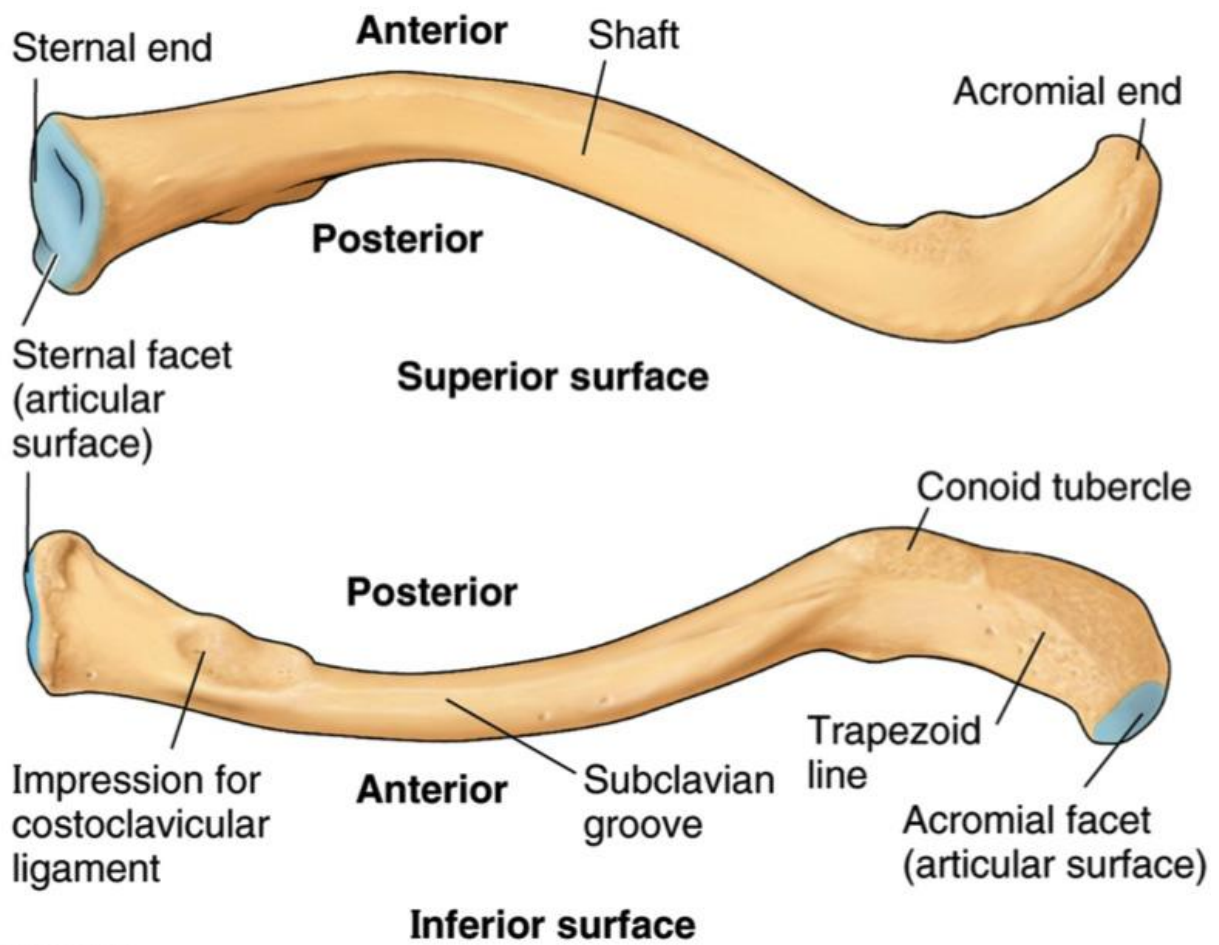


C

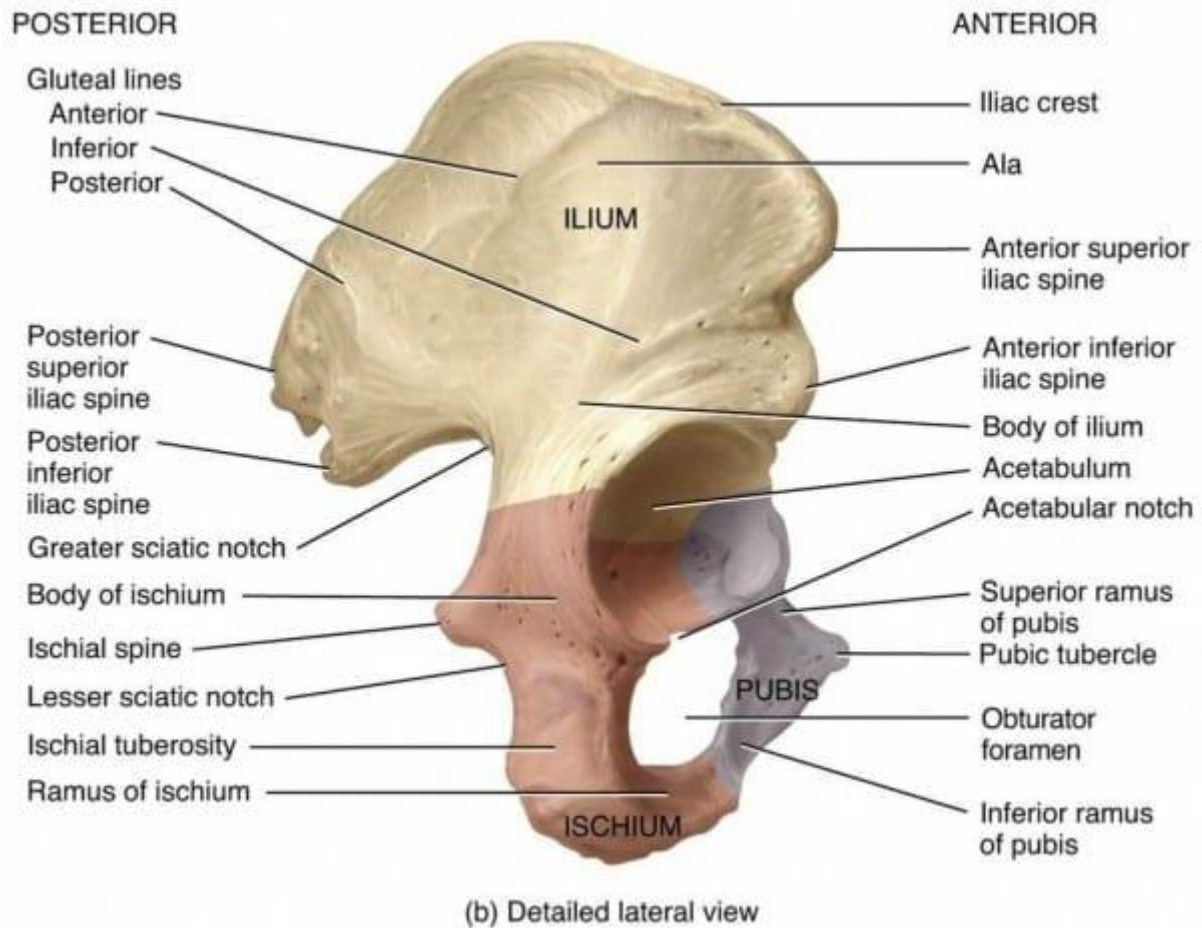


5. Identify the type of joint (if any), location, features and function (s) of the shoulder girdle.



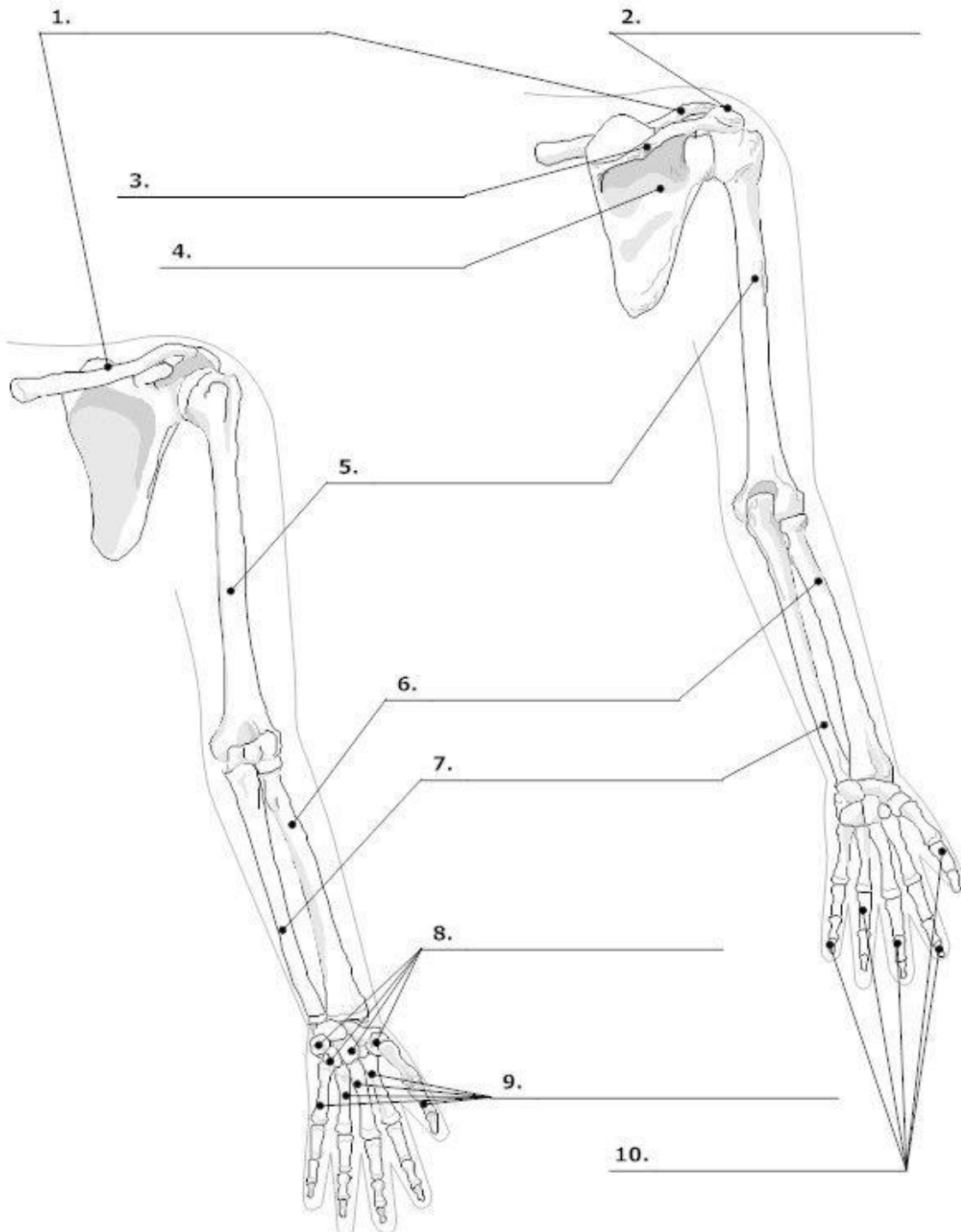


6. Identify the type of joint (if any), location, features and function (s) of the pelvic girdle.



7. Identify the type of joint (if any), location, features and function (s) of the upper limb.

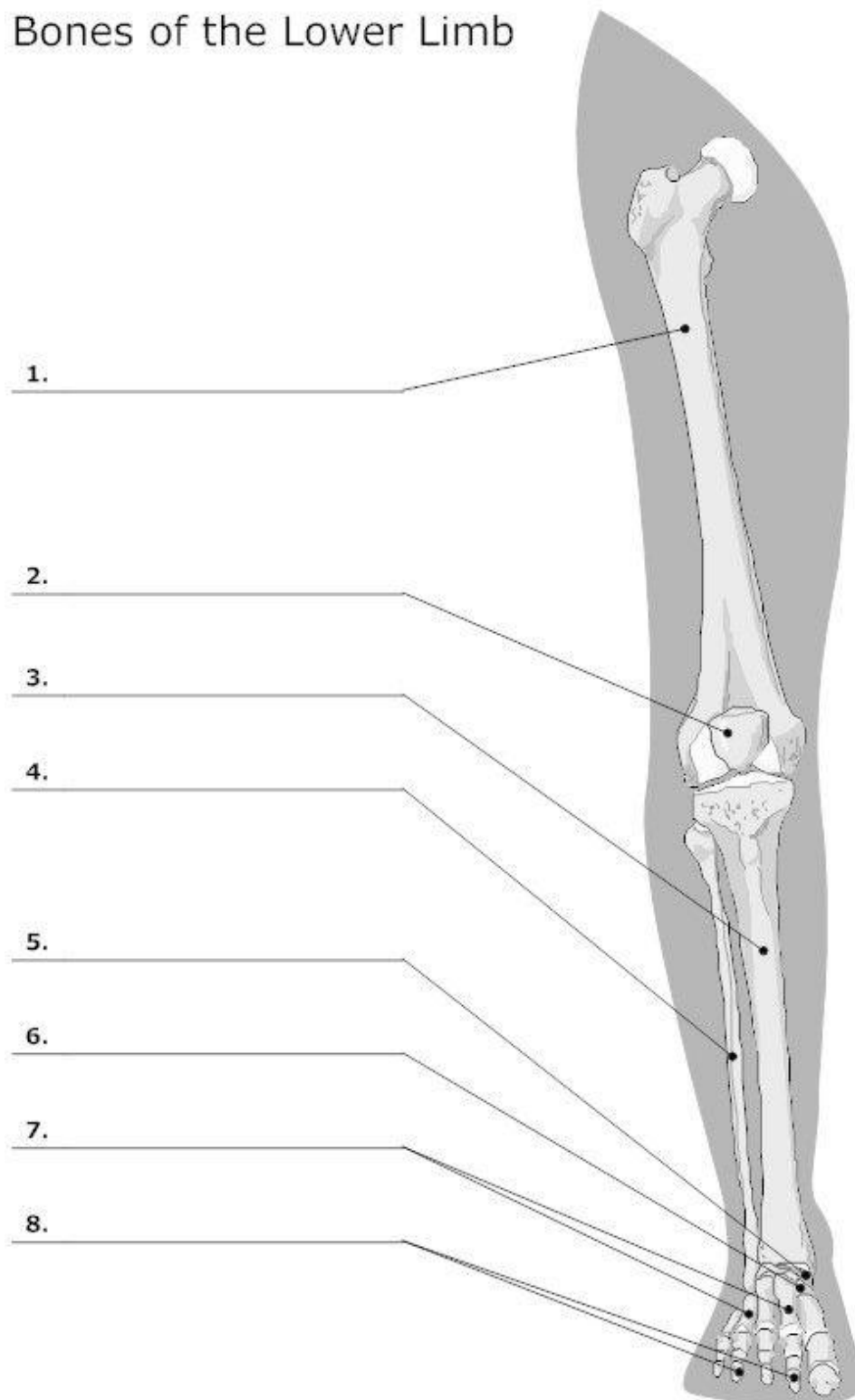
Bones of the Upper Limb



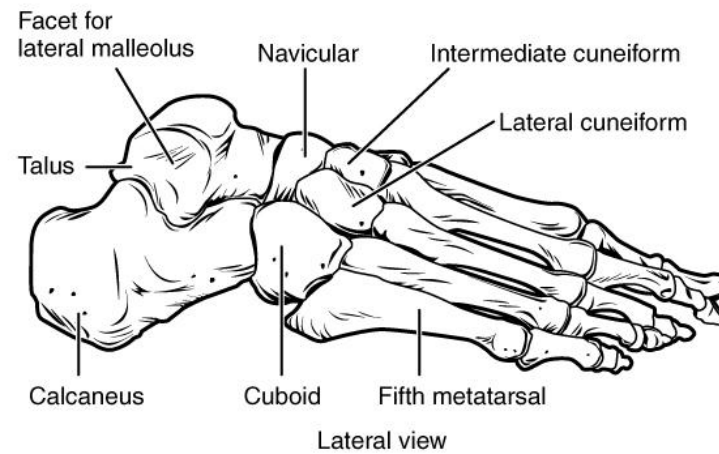
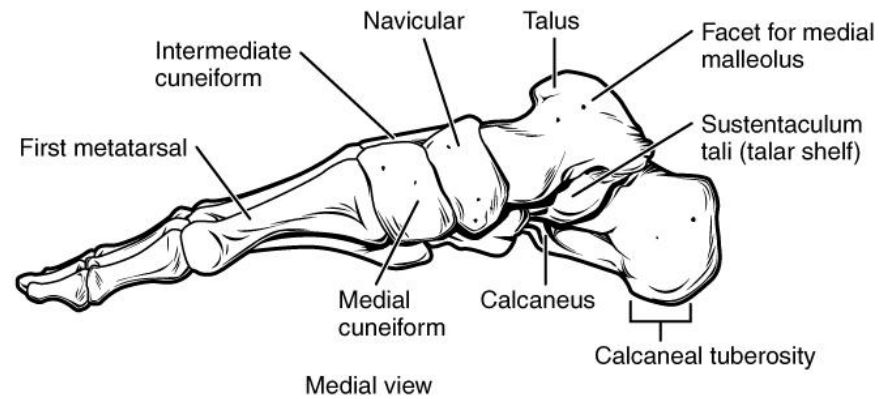
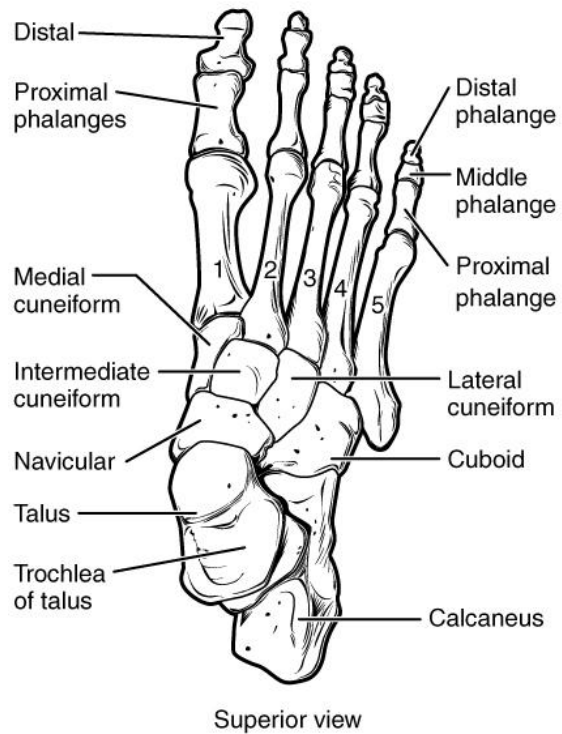
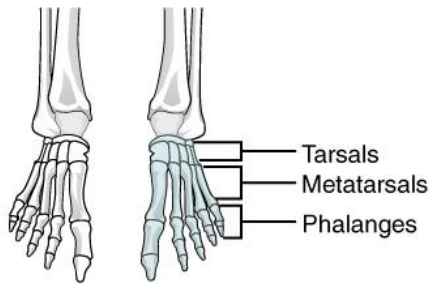
LifeART Collection Images Copyright © 1989-2001 by Lippincott Williams & Wilkins, Baltimore, MD

8. Identify the type of joint (if any), location, features and function (s) of the lower limb.

Bones of the Lower Limb



LifeART Collection Images Copyright © 1989-2001 by Lippincott Williams & Wilkins, Baltimore, MD



END OF PRACTICAL 3

