



يُونِيسْوَ رَسِيْدِي سُلْطَانِ زَيْنِ الْعَابِدِيْنَ
UNISZA
UNIVERSITI SULTAN ZAINAL ABIDIN

PRACTICAL 5:

THE NERVOUS SYSTEM

Full Name:	
Matric No:	
Programme:	
Date of Submission:	
Objective (s):	<ol style="list-style-type: none">1. Identify all structures related to the cerebrum.2. Identify all structures related to the cerebellum.3. Identify all structures related to the brainstem.4. Identify all structures related to the spinal cord.5. Identify all structures related to the brain's ventricles.6. Identify all structures related to the 12 cranial nerves.7. Identify all regions related to the hypothalamus.

INSTRUCTION (S):

1. Identify all structures related to the cerebrum.

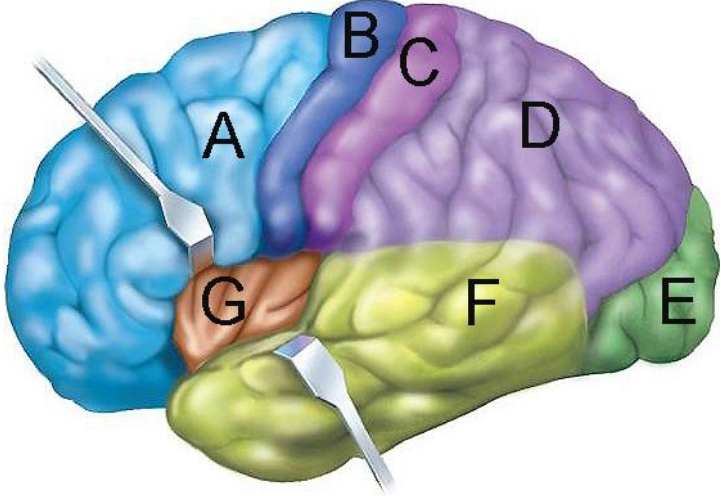


Diagram 1.1

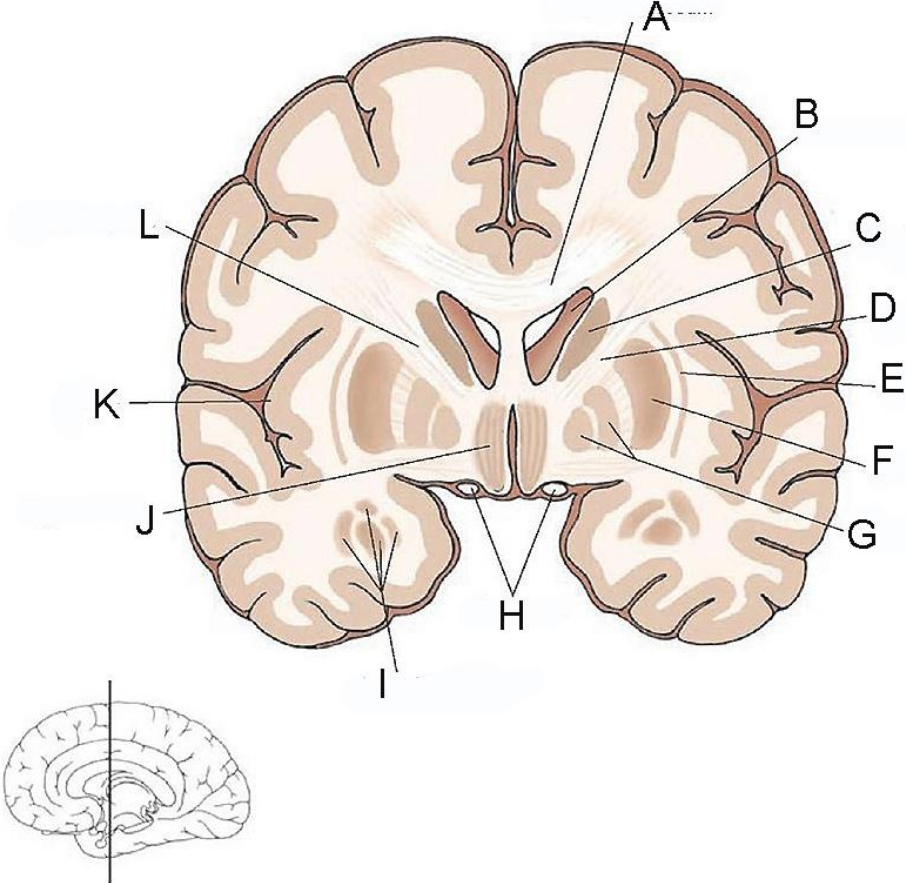


Diagram 1.2

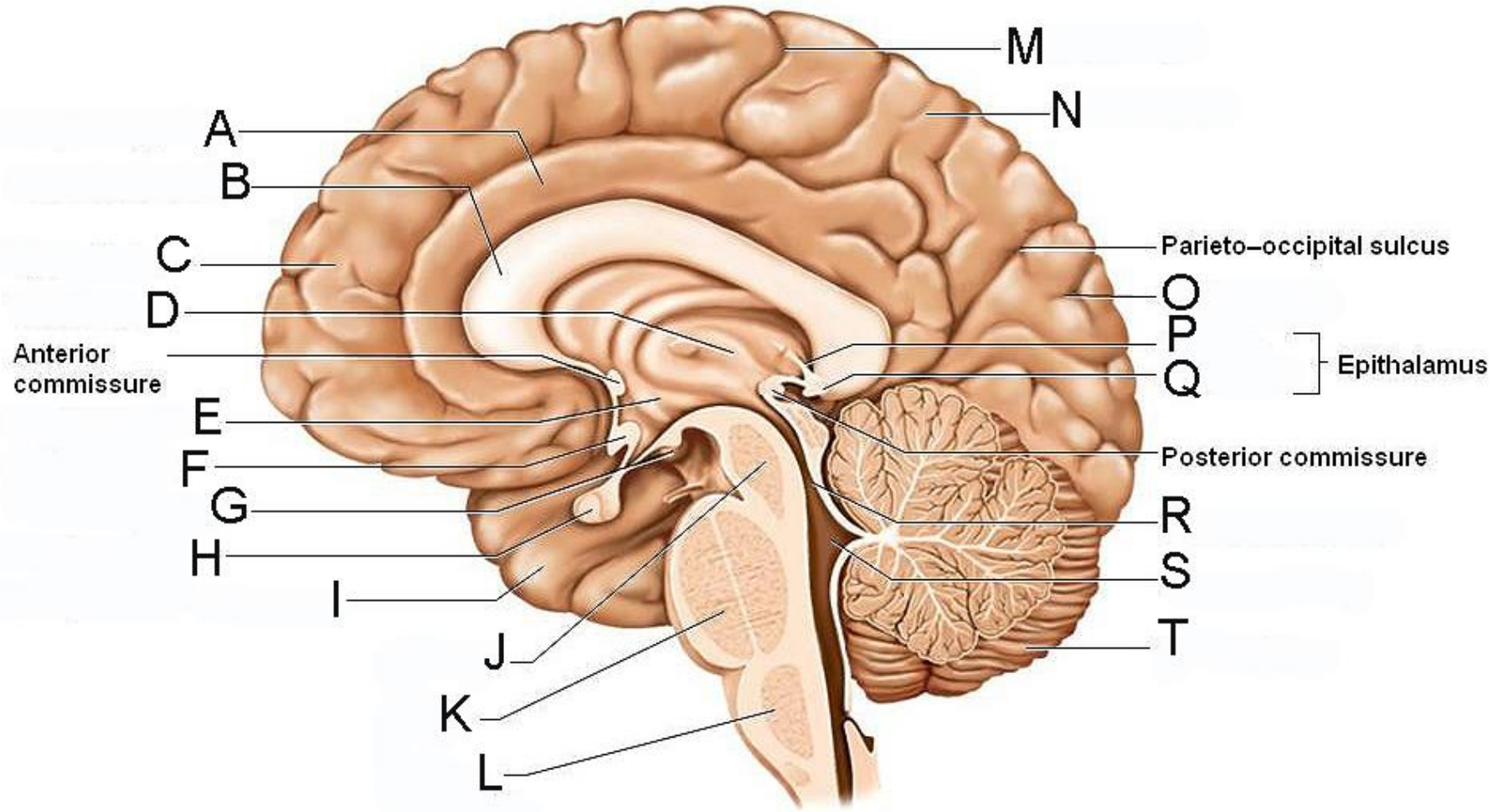


Diagram 1.3

2. Identify all structures related to the cerebellum.

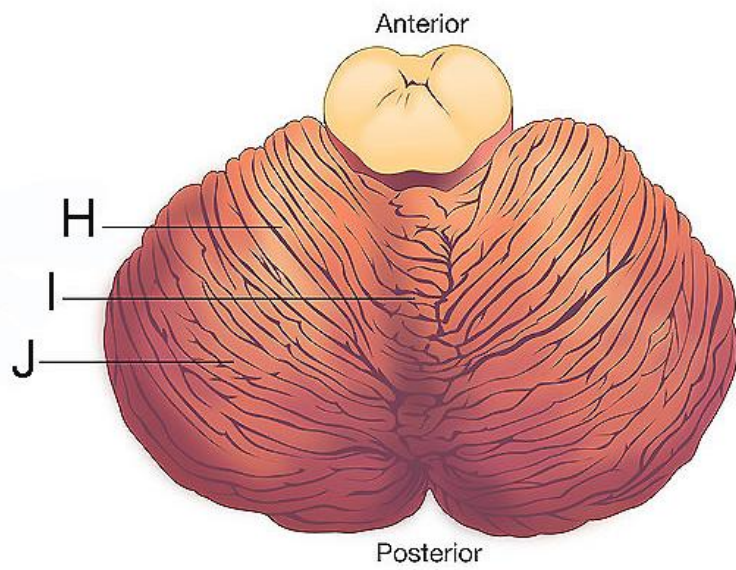
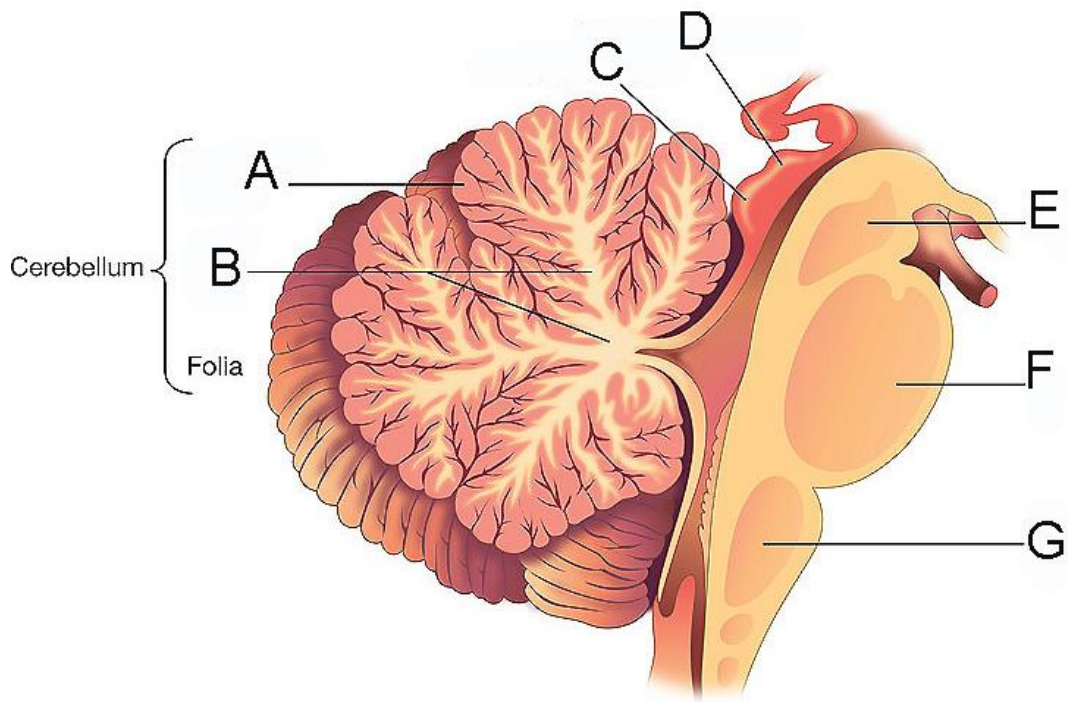


Diagram 2.1

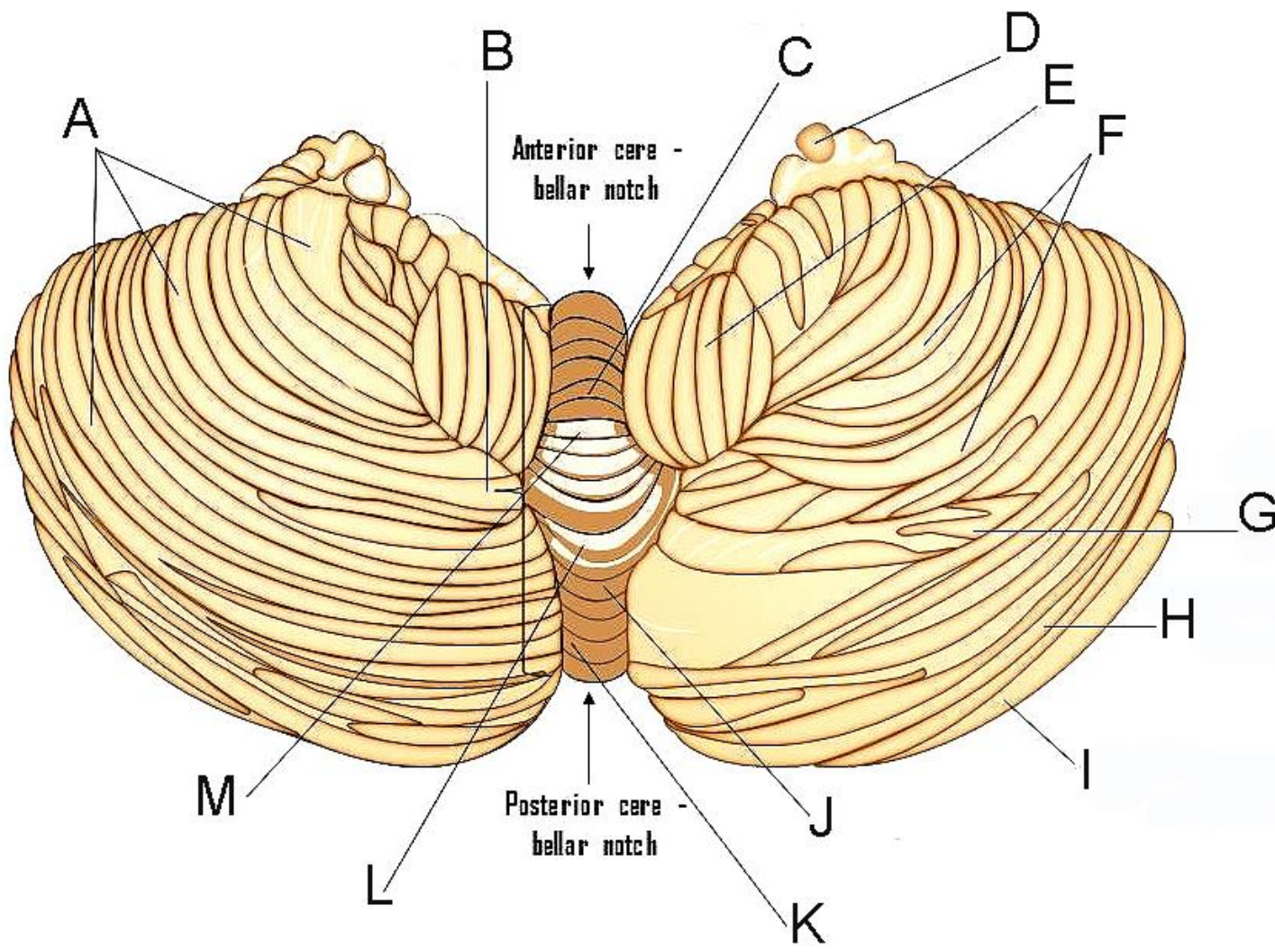


Diagram 2.2

3. Identify all structures related to the brainstem.

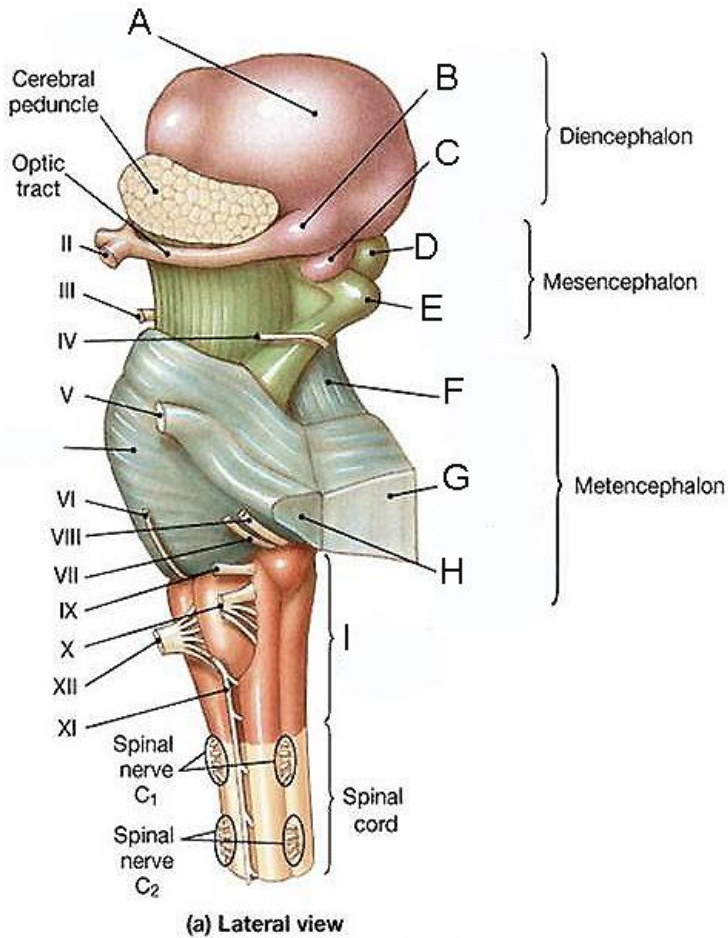
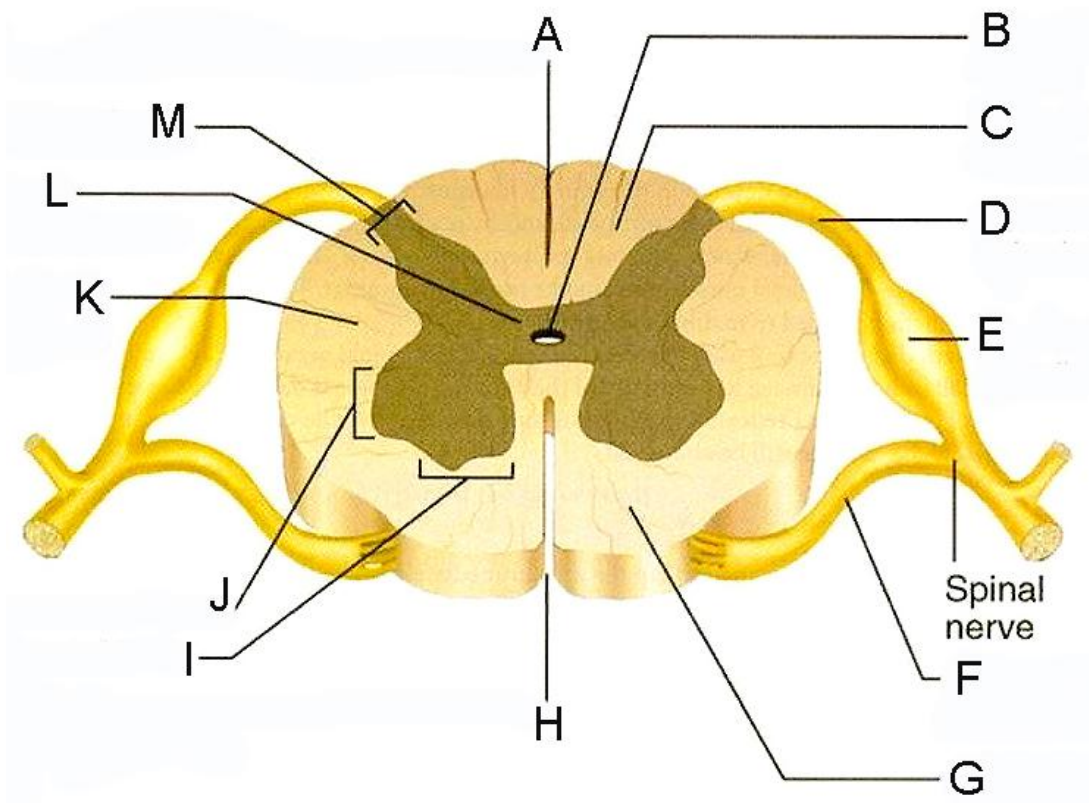
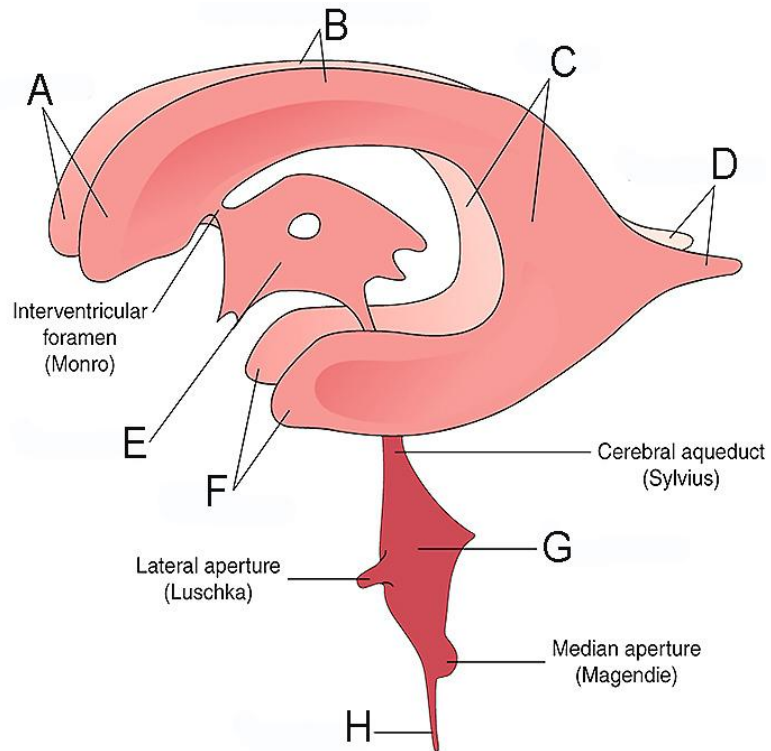


Diagram 3.1

4. Identify all structures related to the spinal cord.

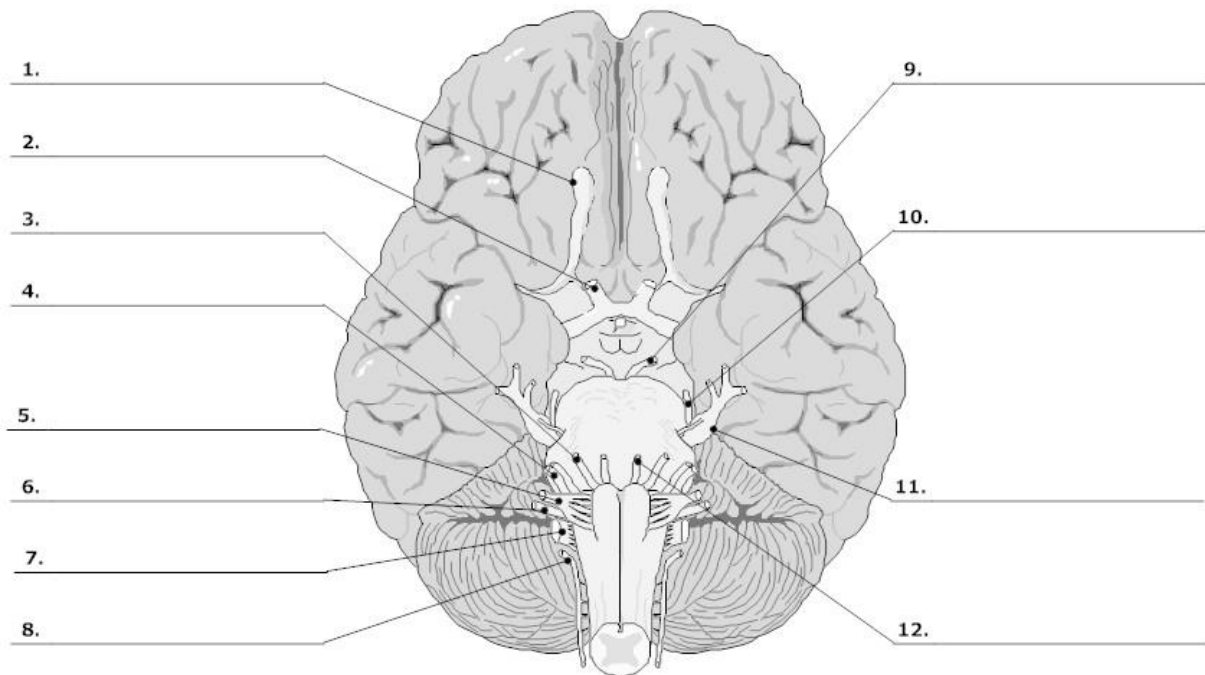


5. Identify all structures related to the brain's ventricles.



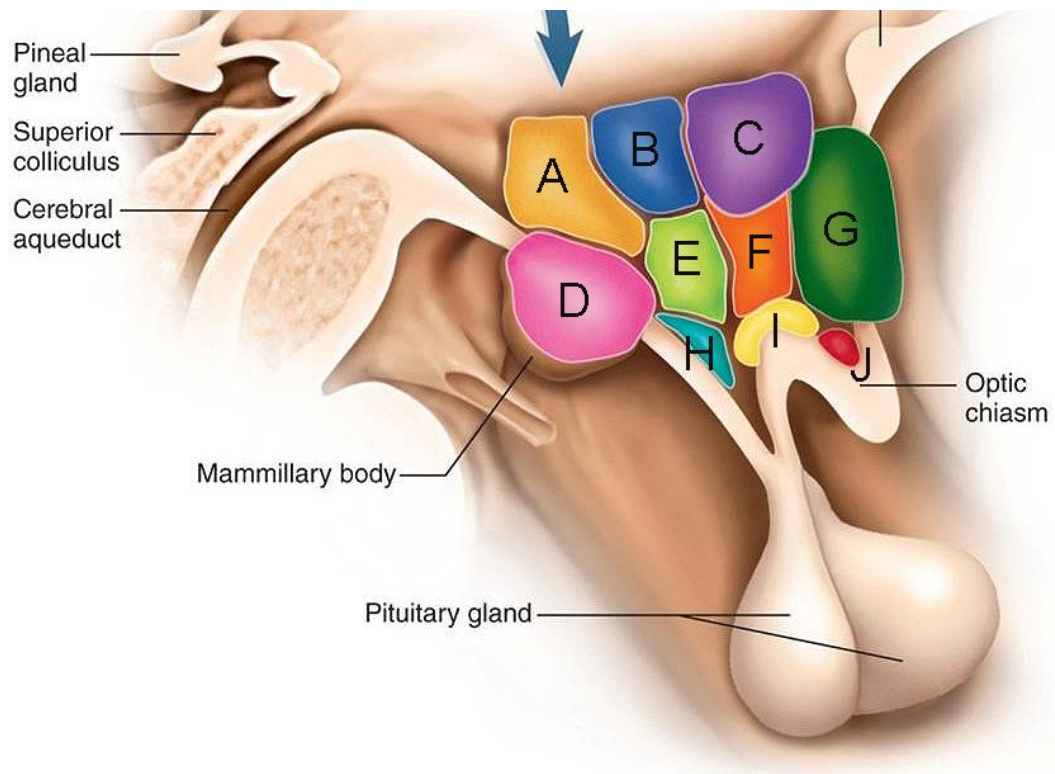
6. Identify all structures related to the 12 cranial nerves.

Cranial Nerves and Brainstem



LIFEART Collection Images Copyright © 1989-2001 by Lippincott Williams & Wilkins, Baltimore, MD

7. Identify all regions related to the hypothalamus.



END OF PRACTICAL 5