



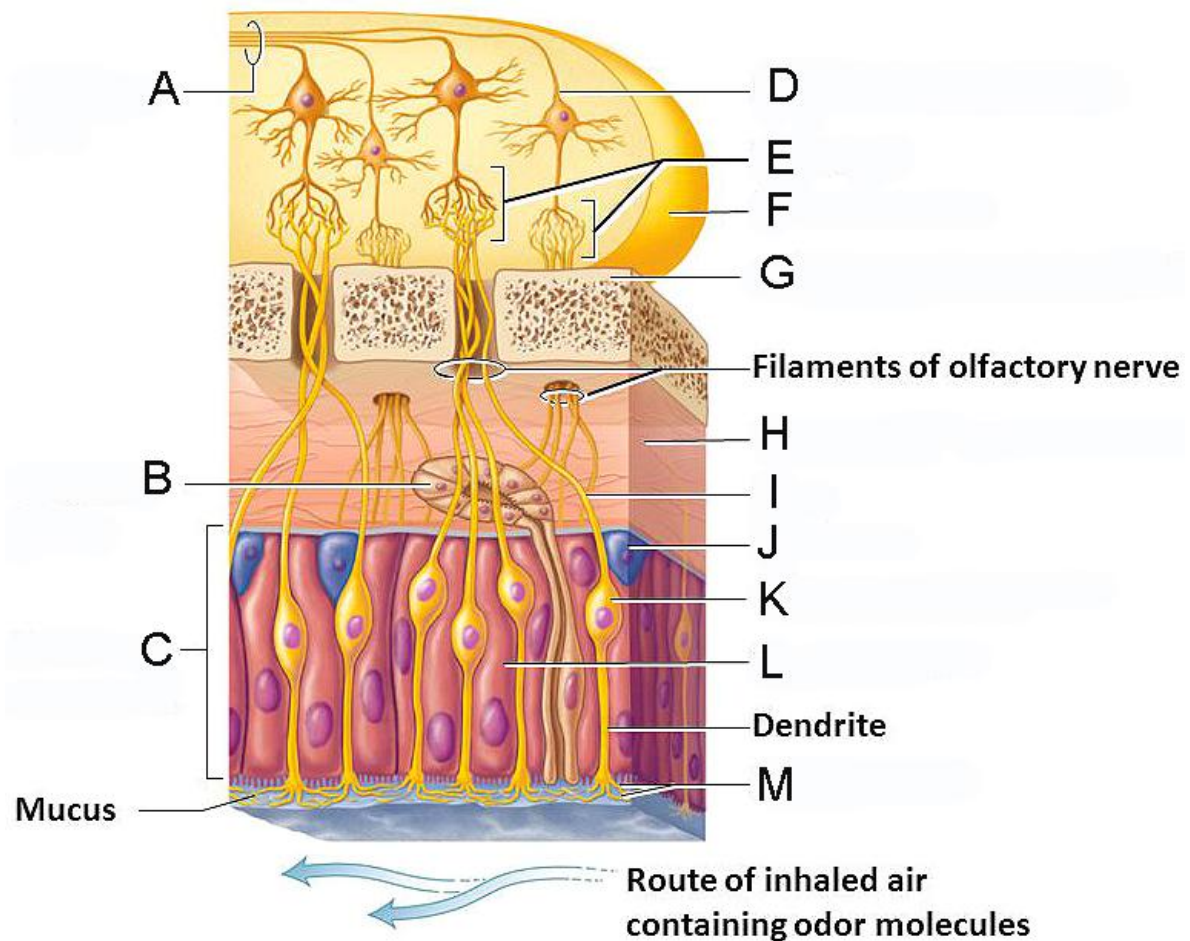
# PRACTICAL 6:

## THE SENSORY SYSTEM

Full Name:	
Matric No:	
Programme:	
Date of Submission:	
Objective (s):	<ol style="list-style-type: none"><li>1. Identify the gross anatomy of the nose and the structures related to the physiology of olfaction.</li><li>2. Identify the gross anatomy of the eye and the structures related to the physiology of sight.</li><li>3. Identify the gross anatomy of the ear and the structures related to the physiology of hearing and body balance.</li><li>4. Identify the gross anatomy of the tongue and the structures related to the physiology of gustation.</li><li>5. Identify the gross anatomy of the skin and the structures related to the physiology of tactile sensation.</li></ol>

## INSTRUCTION (S):

1. Identify the gross anatomy of the nose and the structures related to the physiology of olfaction.



2. Identify the gross anatomy of the eye and the structures related to the physiology of sight.

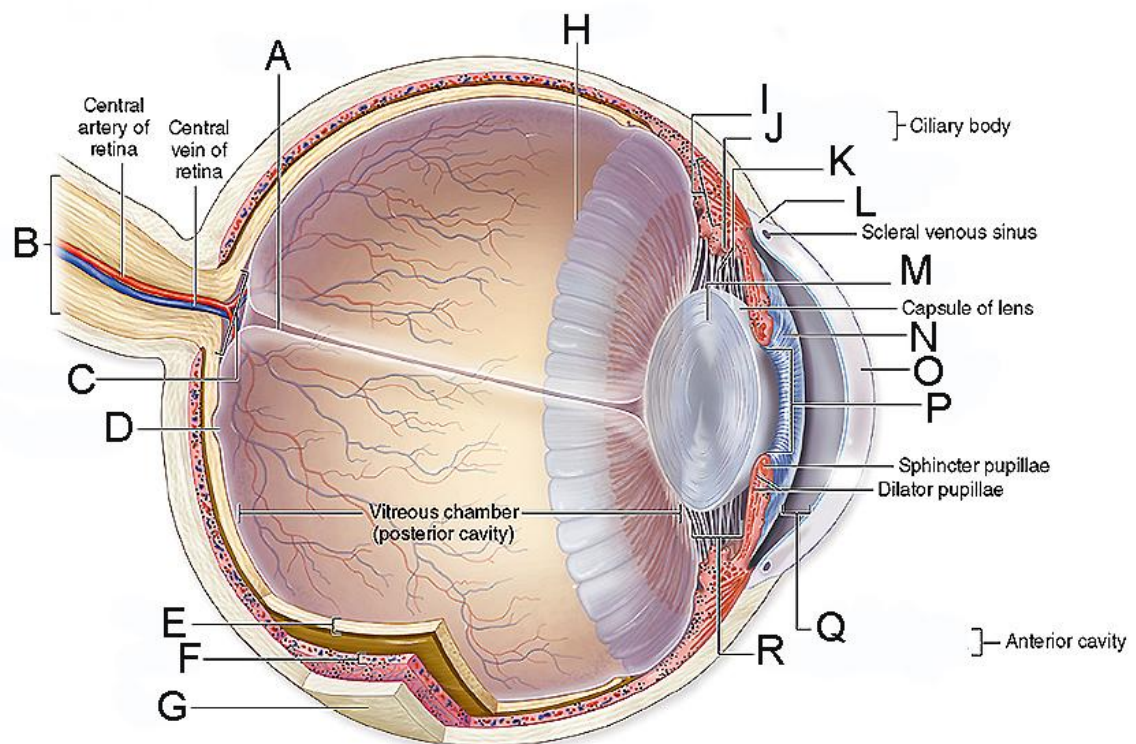
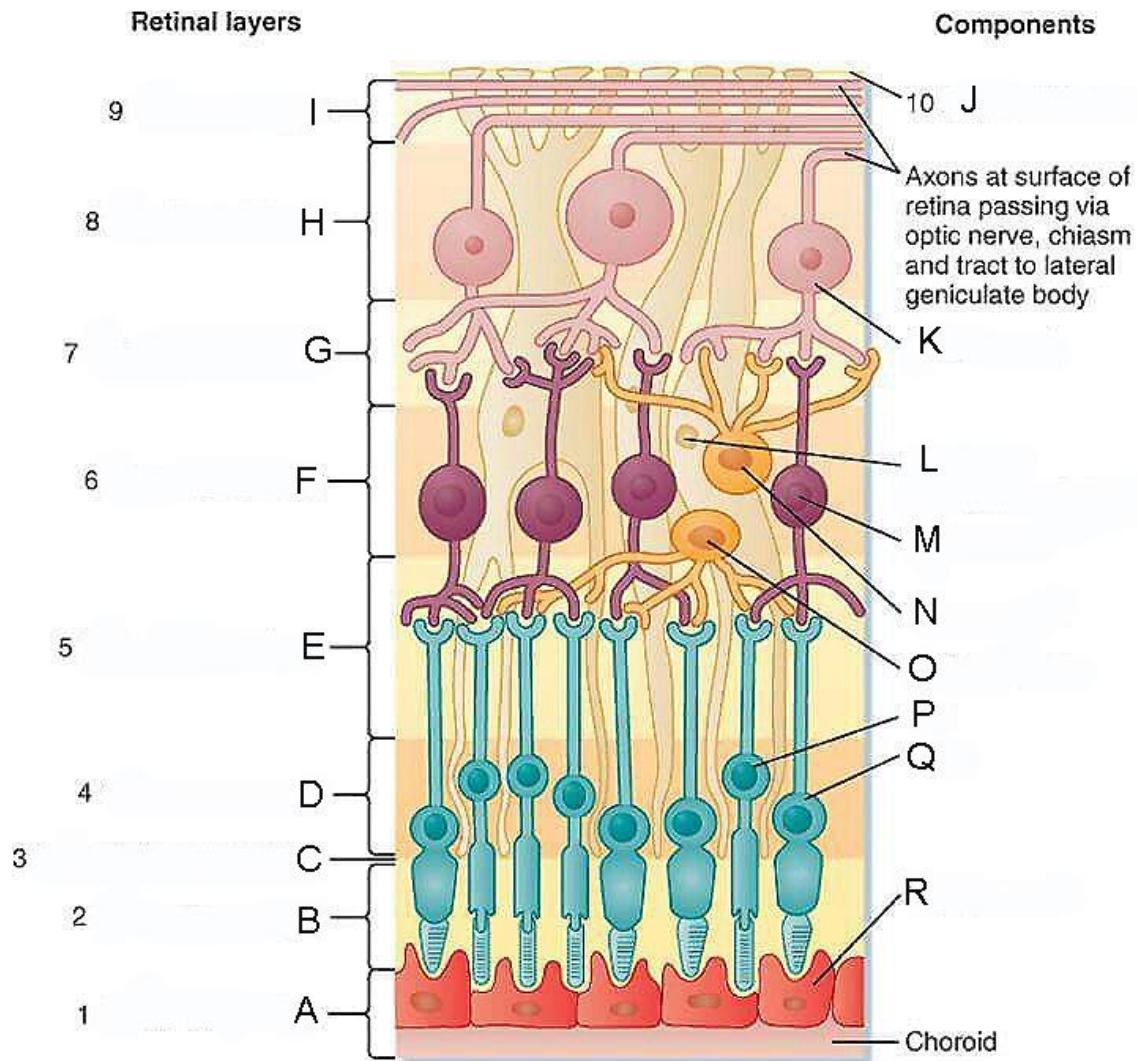


Diagram 2.1



Koeppen & Stanton: Berne and Levy Physiology, 6th Edition.  
Copyright © 2008 by Mosby, an imprint of Elsevier, Inc. All rights reserved

Diagram 2.2

3. Identify the gross anatomy of the ear and the structures related to the physiology of hearing and body balance.

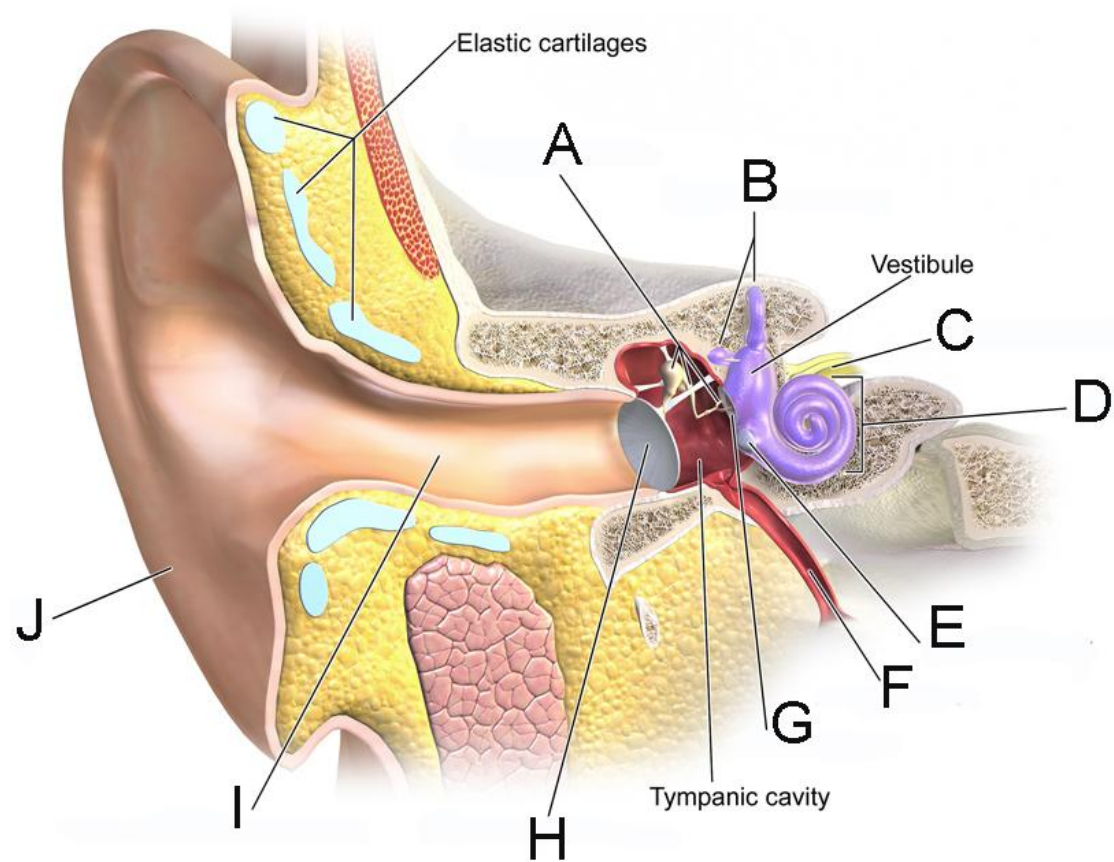


Diagram 3.1



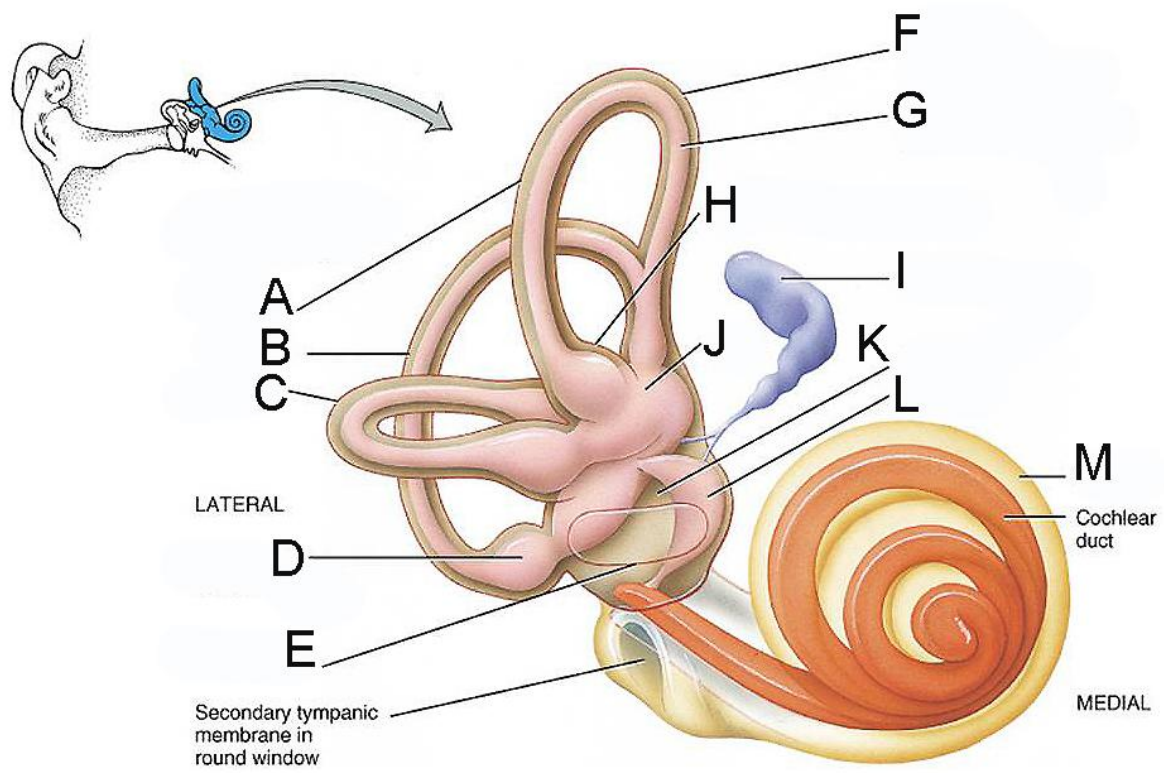


Diagram 3.2

4. Identify the gross anatomy of the tongue and the structures related to the physiology of gustation.

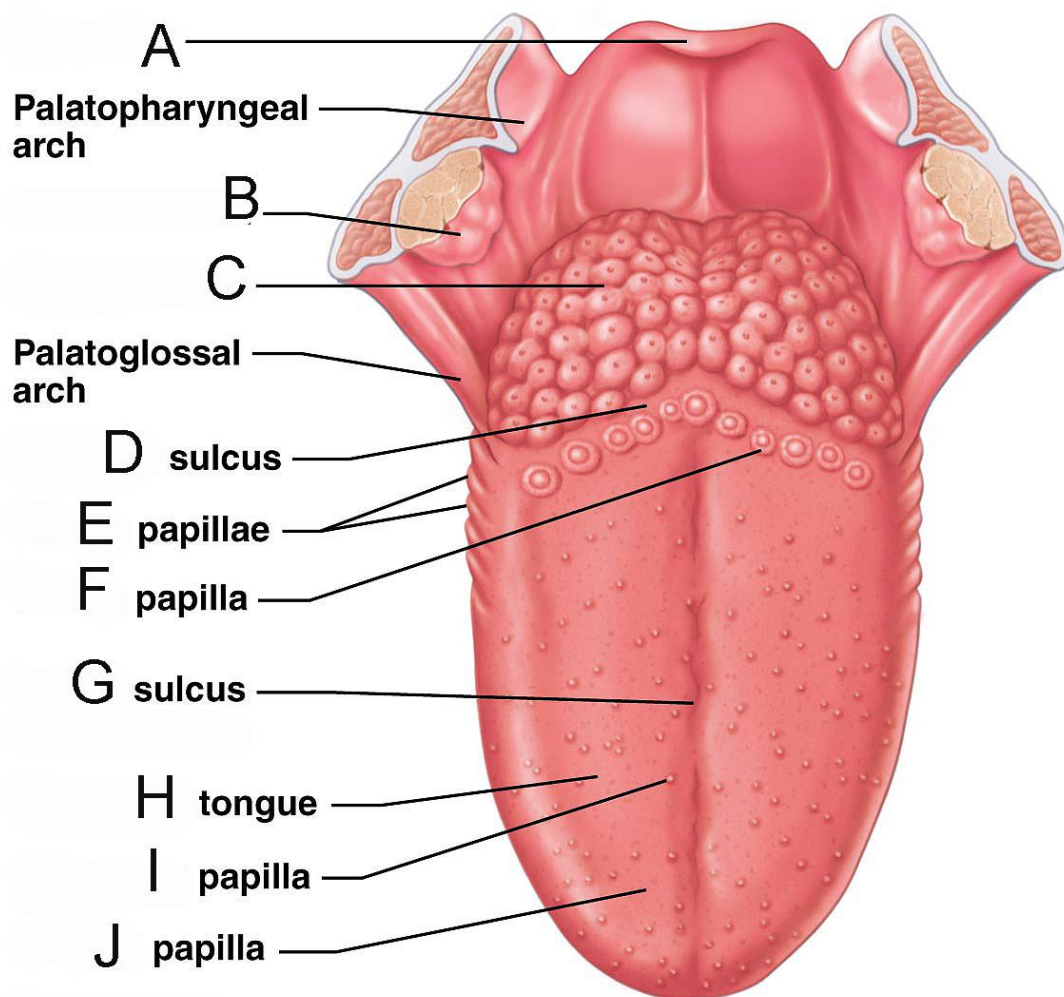
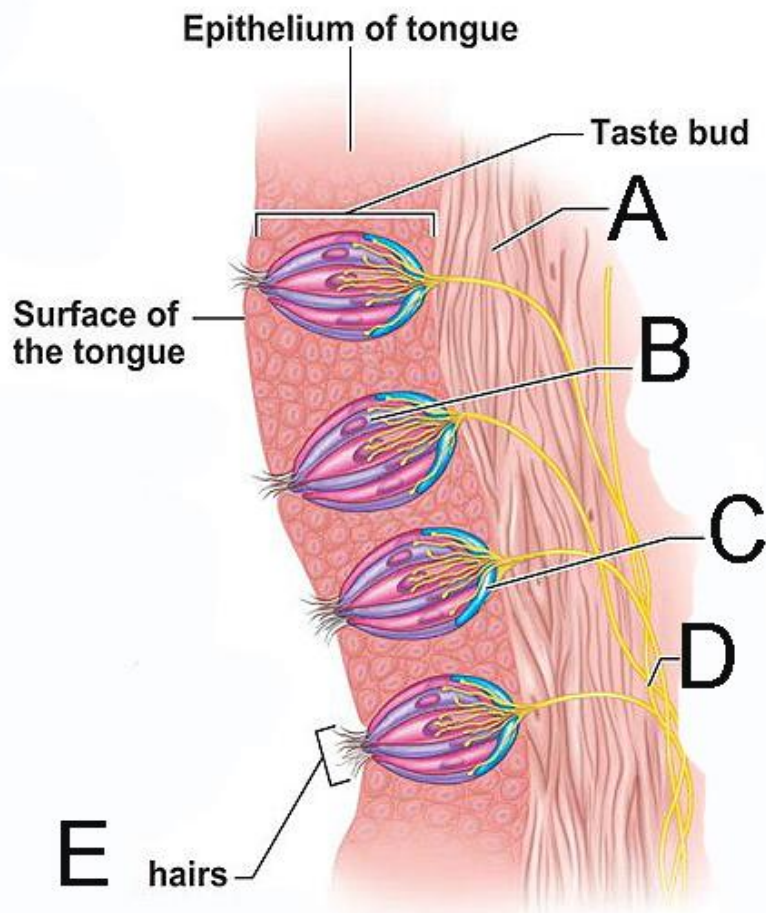


Diagram 4.1

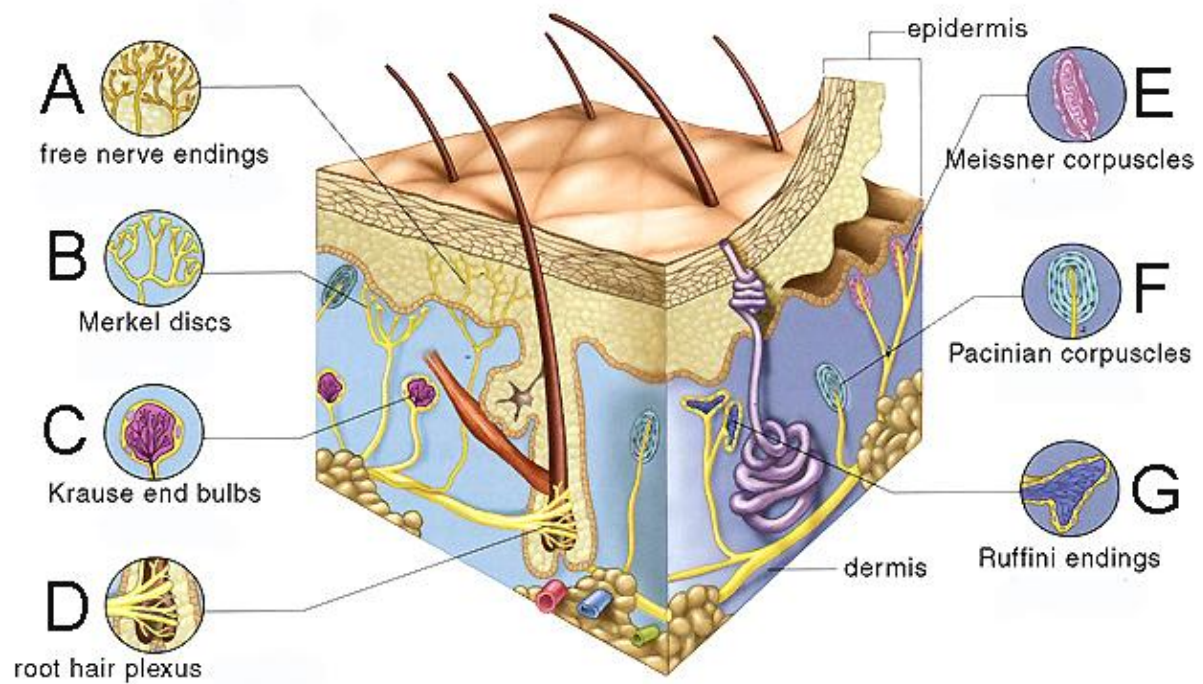


(c)

Diagram 4.2



5. Identify the gross anatomy of the skin and state **ONE (1)** specific function for the following labels (A → G).



END OF PRACTICAL 6